



**ELECTRONIC COPY**

743535221  
Report verification at [igi.org](http://igi.org)



December 4, 2025  
IGI Report Number **743535221**  
Description **NATURAL DIAMOND**  
Shape and Cutting Style **SQUARE CUSHION MODIFIED  
BRILLIANT**

Measurements **5.71 X 5.49 X 3.84 MM**

**GRADING RESULTS**

Carat Weight **1.05 CARAT**  
Color Grade **H**  
Clarity Grade **I 1**  
Cut Grade **VERY GOOD**

**DIAMOND REPORT**

December 4, 2025  
IGI Report Number **743535221**  
Description **NATURAL DIAMOND**  
Shape and Cutting Style **SQUARE CUSHION MODIFIED  
BRILLIANT**  
Measurements **5.71 X 5.49 X 3.84 MM**

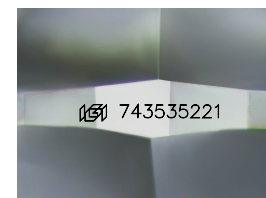
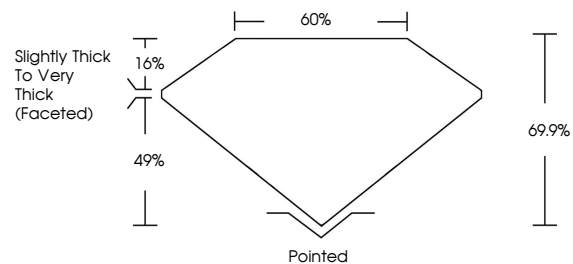
**GRADING RESULTS**

Carat Weight **1.05 CARAT**  
Color Grade **H**  
Clarity Grade **I 1**  
Cut Grade **VERY GOOD**

**ADDITIONAL GRADING INFORMATION**

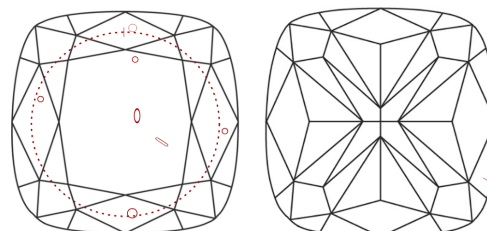
Polish **VERY GOOD**  
Symmetry **VERY GOOD**  
Fluorescence **VERY SLIGHT**  
Inscription(s) **743535221**

**PROPORTIONS**



Sample Image Used

**CLARITY CHARACTERISTICS**



**KEY TO SYMBOLS**

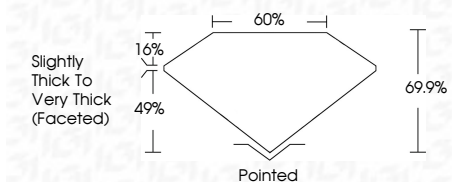
Red symbols indicate internal characteristics.  
Green symbols indicate external characteristics.

**COLOR**

D - F	G - J	K - M	N - R	S - Z	FANCY
Colorless	Near Colorless	Slightly Tinted	Very Light Color	Light Color	

**CLARITY**

FL	IF	VVS <sup>1-2</sup>	VS <sup>1-2</sup>	SI <sup>1-2</sup>	I <sup>1-3</sup>
Flawless	Internally Flawless	Very Very Slightly Included	Very Slightly Included	Slightly Included	Included



**ADDITIONAL GRADING INFORMATION**

Polish **VERY GOOD**  
Symmetry **VERY GOOD**  
Fluorescence **VERY SLIGHT**  
Inscription(s) **743535221**



**IGI**



December 4, 2025  
IGI Report No. 743535221  
**SQUARE CUSHION MODIFIED BRILLIANT**  
5.71 X 5.49 X 3.84 MM  
Carat Weight **1.05 CARAT**  
Color Grade **H**  
Clarity Grade **I 1**  
Depth **69.9%**  
Table **60%**  
Girdle **Slightly Thick to Very Thick (Faceted)**  
Culet **Pointed**  
Polish **VERY GOOD**  
Symmetry **VERY GOOD**  
Fluorescence **VERY SLIGHT**  
Inscription(s) **743535221**