



# INTERNATIONAL GEMOLOGICAL INSTITUTE

ELECTRONIC COPY

## DIAMOND REPORT

December 5, 2025

IGI Report Number

743527711

Description

NATURAL DIAMOND

Shape and Cutting Style

ROUND BRILLIANT

Measurements

5.35 - 5.43 X 3.36 MM

### GRADING RESULTS

Carat Weight

0.59 CARAT

Color Grade

I

Clarity Grade

SI 2

Cut Grade

EXCELLENT

### ADDITIONAL GRADING INFORMATION

Polish

EXCELLENT

Symmetry

EXCELLENT

Fluorescence

NONE

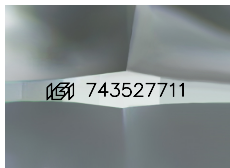
Identification Features

CRYSTAL, FEATHER, CAVITY

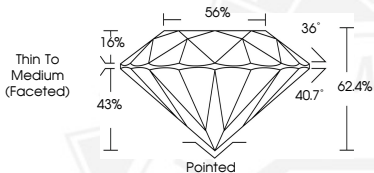
Inscription(s)

IGI 743527711

Comments: IDEAL CUT ROUND BRILLIANT



Sample Image Used



THIS DOCUMENT WAS PRODUCED WITH THE FOLLOWING SECURITY MEASURES: SPECIAL DOCUMENT PAPER, INK SCREENS, WATERMARK, BACKGROUND DESIGNS, HOLOGRAM AND OTHER SECURITY FEATURES NOT LISTED AND DO EXCEED DOCUMENT SECURITY INDUSTRY GUIDELINES.

For terms & conditions and to verify this report, please visit [www.igi.org](http://www.igi.org)



December 5, 2025

IGI Report Number 743527711

ROUND BRILLIANT

NATURAL DIAMOND

5.35 - 5.43 X 3.36 MM

Carat Weight 0.59 CARAT

Color Grade I

Clarity Grade SI 2

Cut Grade EXCELLENT

Polish EXCELLENT

Symmetry EXCELLENT

Fluorescence NONE

Inscription(s) IGI 743527711

Comments: IDEAL CUT ROUND

BRILLIANT



December 5, 2025

IGI Report Number 743527711

ROUND BRILLIANT

NATURAL DIAMOND

5.35 - 5.43 X 3.36 MM

Carat Weight 0.59 CARAT

Color Grade I

Clarity Grade SI 2

Cut Grade EXCELLENT

Polish EXCELLENT

Symmetry EXCELLENT

Fluorescence NONE

Inscription(s) IGI 743527711

Comments: IDEAL CUT ROUND

BRILLIANT