



# INTERNATIONAL GEMOLOGICAL INSTITUTE

## DIAMOND REPORT

December 16, 2025

IGI Report Number

743526846

Description

NATURAL DIAMOND

Shape and Cutting Style

ROUND BRILLIANT

Measurements

5.07 - 5.08 X 3.14 MM

### GRADING RESULTS

Carat Weight

0.50 CARAT

Color Grade

H

Clarity Grade

SI 1

Cut Grade

EXCELLENT

### ADDITIONAL GRADING INFORMATION

Polish

EXCELLENT

Symmetry

EXCELLENT

Fluorescence

NONE

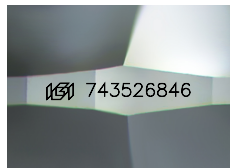
Identification Features

FEATHER, INDENTED NATURAL, CRYSTAL,  
CLOUD

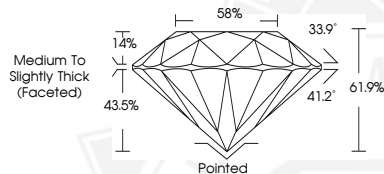
Inscription(s)

IGI 743526846

ELECTRONIC COPY



Sample Image Used



December 16, 2025

IGI Report Number 743526846

ROUND BRILLIANT

NATURAL DIAMOND

5.07 - 5.08 X 3.14 MM

Carat Weight

0.50 CARAT

Color Grade

H

Clarity Grade

SI 1

Cut Grade

EXCELLENT

Polish

EXCELLENT

Symmetry

EXCELLENT

Fluorescence

NONE

Inscription(s)

IGI 743526846



December 16, 2025

IGI Report Number 743526846

ROUND BRILLIANT

NATURAL DIAMOND

5.07 - 5.08 X 3.14 MM

Carat Weight

0.50 CARAT

Color Grade

H

Clarity Grade

SI 1

Cut Grade

EXCELLENT

Polish

EXCELLENT

Symmetry

EXCELLENT

Fluorescence

NONE

Inscription(s)

IGI 743526846



THIS DOCUMENT WAS PRODUCED WITH THE FOLLOWING SECURITY MEASURES: SPECIAL DOCUMENT PAPER, INK SCREENS, WATERMARK, BACKGROUND DESIGNS, HOLOGRAM AND OTHER SECURITY FEATURES NOT LISTED AND DO EXCEED DOCUMENT SECURITY INDUSTRY GUIDELINES.

For terms & conditions and to verify this report, please visit [www.igi.org](http://www.igi.org)