



# INTERNATIONAL GEMOLOGICAL INSTITUTE

## DIAMOND REPORT

January 19, 2026  
IGI Report Number  
Description  
Shape and Cutting Style  
Measurements

743526646  
NATURAL DIAMOND  
ROUND BRILLIANT  
5.76 - 5.79 X 3.60 MM

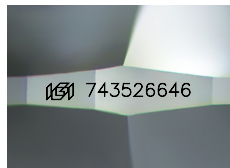
## GRADING RESULTS

Carat Weight 0.75 CARAT  
Color Grade G  
Clarity Grade SI 2  
Cut Grade EXCELLENT

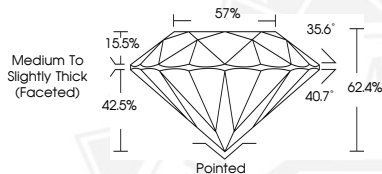
## ADDITIONAL GRADING INFORMATION

Polish EXCELLENT  
Symmetry EXCELLENT  
Fluorescence VERY SLIGHT  
Identification Features CRYSTAL, FEATHER, CLOUD  
Inscription(s) IGI 743526646  
Comments: IDEAL CUT ROUND BRILLIANT

ELECTRONIC COPY



Sample Image Used



THIS DOCUMENT WAS PRODUCED WITH THE FOLLOWING SECURITY MEASURES: SPECIAL DOCUMENT PAPER, INK SCREENS, WATERMARK, BACKGROUND DESIGNS, HOLOGRAM AND OTHER SECURITY FEATURES NOT LISTED AND DO EXCEED DOCUMENT SECURITY INDUSTRY GUIDELINES.

For terms & conditions and to verify this report, please visit [www.igi.org](http://www.igi.org)



January 19, 2026

IGI Report Number 743526646

ROUND BRILLIANT

NATURAL DIAMOND

5.76 - 5.79 X 3.60 MM

Carat Weight 0.75 CARAT

Color Grade G

Clarity Grade SI 2

Cut Grade EXCELLENT

Polish EXCELLENT

Symmetry EXCELLENT

Fluorescence VERY SLIGHT

Inscription(s) IGI 743526646

Comments: IDEAL CUT ROUND

BRILLIANT



January 19, 2026

IGI Report Number 743526646

ROUND BRILLIANT

NATURAL DIAMOND

5.76 - 5.79 X 3.60 MM

Carat Weight 0.75 CARAT

Color Grade G

Clarity Grade SI 2

Cut Grade EXCELLENT

Polish EXCELLENT

Symmetry EXCELLENT

Fluorescence VERY SLIGHT

Inscription(s) IGI 743526646

Comments: IDEAL CUT ROUND

BRILLIANT