



# INTERNATIONAL GEMOLOGICAL INSTITUTE

## DIAMOND REPORT

December 11, 2025

IGI Report Number

743526534

Description

NATURAL DIAMOND

Shape and Cutting Style

ROUND BRILLIANT

Measurements

5.99 - 6.02 X 3.64 MM

### GRADING RESULTS

Carat Weight

0.80 CARAT

Color Grade

J

Clarity Grade

I1

Cut Grade

EXCELLENT

### ADDITIONAL GRADING INFORMATION

Polish

EXCELLENT

Symmetry

EXCELLENT

Fluorescence

STRONG

Identification Features

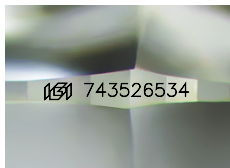
CRYSTAL, FEATHER, CLOUD

Inscription(s)

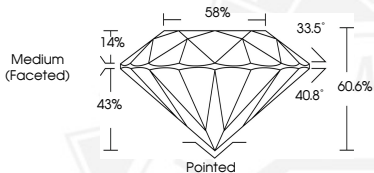
IGI 743526534

Comments: IDEAL CUT ROUND BRILLIANT

ELECTRONIC COPY



Sample Image Used



THIS DOCUMENT WAS PRODUCED WITH THE FOLLOWING SECURITY MEASURES: SPECIAL DOCUMENT PAPER, INK SCREENS, WATERMARK, BACKGROUND DESIGNS, HOLOGRAM AND OTHER SECURITY FEATURES NOT LISTED AND DO EXCEED DOCUMENT SECURITY INDUSTRY GUIDELINES.

For terms & conditions and to verify this report, please visit [www.igi.org](http://www.igi.org)



December 11, 2025

IGI Report Number 743526534

ROUND BRILLIANT

NATURAL DIAMOND

5.99 - 6.02 X 3.64 MM

Carat Weight 0.80 CARAT

Color Grade J

Clarity Grade I1

Cut Grade EXCELLENT

Polish EXCELLENT

Symmetry EXCELLENT

Fluorescence STRONG

Inscription(s) IGI 743526534

Comments: IDEAL CUT ROUND

BRILLIANT



December 11, 2025

IGI Report Number 743526534

ROUND BRILLIANT

NATURAL DIAMOND

5.99 - 6.02 X 3.64 MM

Carat Weight 0.80 CARAT

Color Grade J

Clarity Grade I1

Cut Grade EXCELLENT

Polish EXCELLENT

Symmetry EXCELLENT

Fluorescence STRONG

Inscription(s) IGI 743526534

Comments: IDEAL CUT ROUND

BRILLIANT