



# INTERNATIONAL GEMOLOGICAL INSTITUTE

## DIAMOND REPORT

January 10, 2026  
IGI Report Number  
Description  
Shape and Cutting Style  
Measurements

**743526179**  
**NATURAL DIAMOND**  
**ROUND BRILLIANT**  
**4.87 - 4.90 X 3.07 MM**

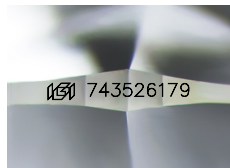
## GRADING RESULTS

Carat Weight **0.44 CARAT**  
Color Grade **H**  
Clarity Grade **SI 1**  
Cut Grade **EXCELLENT**

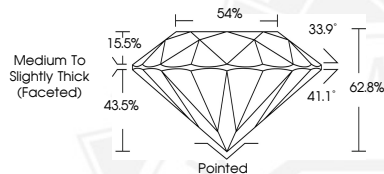
## ADDITIONAL GRADING INFORMATION

Polish **EXCELLENT**  
Symmetry **EXCELLENT**  
Fluorescence **NONE**  
Identification Features **CRYSTAL CLOUD**  
Inscription(s) **(IGI) 743526179**

ELECTRONIC COPY



Sample Image Used



January 10, 2026  
IGI Report Number **743526179**  
**ROUND BRILLIANT**  
**NATURAL DIAMOND**  
**4.87 - 4.90 X 3.07 MM**  
Carat Weight **0.44 CARAT**  
Color Grade **H**  
Clarity Grade **SI 1**  
Cut Grade **EXCELLENT**  
Polish **EXCELLENT**  
Symmetry **EXCELLENT**  
Fluorescence **NONE**  
Inscription(s) **(IGI) 743526179**



January 10, 2026  
IGI Report Number **743526179**  
**ROUND BRILLIANT**  
**NATURAL DIAMOND**  
**4.87 - 4.90 X 3.07 MM**  
Carat Weight **0.44 CARAT**  
Color Grade **H**  
Clarity Grade **SI 1**  
Cut Grade **EXCELLENT**  
Polish **EXCELLENT**  
Symmetry **EXCELLENT**  
Fluorescence **NONE**  
Inscription(s) **(IGI) 743526179**



THIS DOCUMENT WAS PRODUCED WITH THE FOLLOWING SECURITY MEASURES: SPECIAL DOCUMENT PAPER, INK SCREENS, WATERMARK, BACKGROUND DESIGNS, HOLOGRAM AND OTHER SECURITY FEATURES NOT LISTED AND DO EXCEED DOCUMENT SECURITY INDUSTRY GUIDELINES.

For terms & conditions and to verify this report, please visit [www.igi.org](http://www.igi.org)