



# INTERNATIONAL GEMOLOGICAL INSTITUTE

ELECTRONIC COPY

## DIAMOND REPORT

October 27, 2025

IGI Report Number

743524862

Description

NATURAL DIAMOND

Shape and Cutting Style

ROUND BRILLIANT

Measurements

5.22 - 5.24 X 3.22 MM

### GRADING RESULTS

Carat Weight

0.54 CARAT

Color Grade

I

Clarity Grade

SI 1

Cut Grade

EXCELLENT

### ADDITIONAL GRADING INFORMATION

Polish

EXCELLENT

Symmetry

EXCELLENT

Fluorescence

NONE

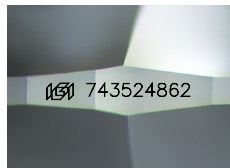
Identification Features

FEATHER, CLOUD

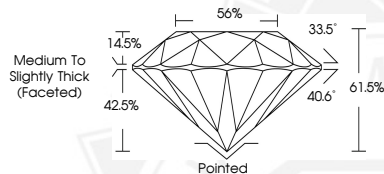
Inscription(s)

IGI 743524862

Comments: IDEAL CUT ROUND BRILLIANT



Sample Image Used



October 27, 2025

IGI Report Number 743524862

ROUND BRILLIANT

NATURAL DIAMOND

5.22 - 5.24 X 3.22 MM

Carat Weight 0.54 CARAT

Color Grade I

Clarity Grade SI 1

Cut Grade EXCELLENT

Polish EXCELLENT

Symmetry EXCELLENT

Fluorescence NONE

Inscription(s) IGI 743524862

Comments: IDEAL CUT ROUND

BRILLIANT



October 27, 2025

IGI Report Number 743524862

ROUND BRILLIANT

NATURAL DIAMOND

5.22 - 5.24 X 3.22 MM

Carat Weight 0.54 CARAT

Color Grade I

Clarity Grade SI 1

Cut Grade EXCELLENT

Polish EXCELLENT

Symmetry EXCELLENT

Fluorescence NONE

Inscription(s) IGI 743524862

Comments: IDEAL CUT ROUND

BRILLIANT



THIS DOCUMENT WAS PRODUCED WITH THE FOLLOWING SECURITY MEASURES: SPECIAL DOCUMENT PAPER, INK SCREENS, WATERMARK, BACKGROUND DESIGNS, HOLOGRAM AND OTHER SECURITY FEATURES NOT LISTED AND DO EXCEED DOCUMENT SECURITY INDUSTRY GUIDELINES.

For terms & conditions and to verify this report, please visit [www.igi.org](http://www.igi.org)