



ELECTRONIC COPY

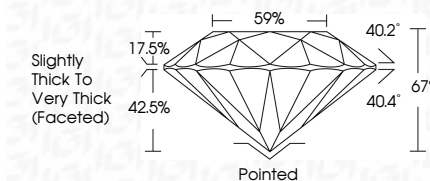
743524226
Report verification at igi.org



April 20, 2026
IGI Report Number **743524226**
Description **NATURAL DIAMOND**
Shape and Cutting Style **ROUND BRILLIANT**
Measurements **5.99 - 6.12 X 4.07 MM**

GRADING RESULTS

Carat Weight **1.00 CARAT**
Color Grade **H**
Clarity Grade **VVS 2**
Cut Grade **GOOD**



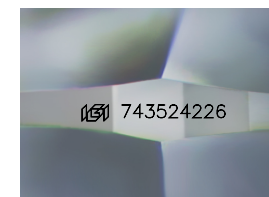
ADDITIONAL GRADING INFORMATION

Polish **EXCELLENT**
Symmetry **VERY GOOD**
Fluorescence **NONE**
Inscription(s) **IGI 743524226**



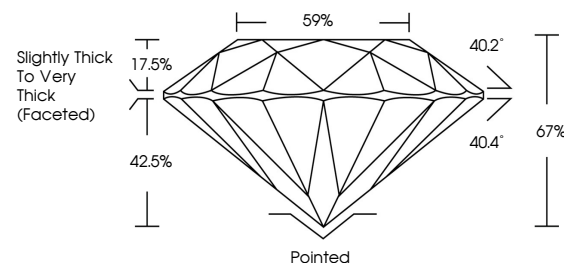
IGI

April 20, 2026
IGI Report No 743524226
ROUND BRILLIANT
5.99 - 6.12 X 4.07 MM
Carat Weight **1.00 CARAT**
Color Grade **H**
Clarity Grade **VVS 2**
Depth **GOOD**
Table **67%**
Girdle **67%**
Slightly Thick to Very Thick (Faceted)
Culet **Pointed**
Polish **EXCELLENT**
Symmetry **VERY GOOD**
Fluorescence **NONE**
Inscriptions(s) **IGI 743524226**

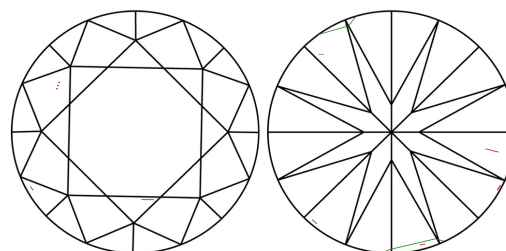


Sample Image Used

PROPORTIONS



CLARITY CHARACTERISTICS



KEY TO SYMBOLS

Red symbols indicate internal characteristics.
Green symbols indicate external characteristics.

COLOR

D - F	G - J	K - M	N - R	S - Z	FANCY
Colorless	Near Colorless	Slightly Tinted	Very Light Color	Light Color	

CLARITY

FL	IF	VVS 1-2	VS 1-2	SI 1-2	I 1-3
Flawless	Internally Flawless	Very Very Slightly Included	Very Slightly Included	Slightly Included	Included

