



**ELECTRONIC COPY**

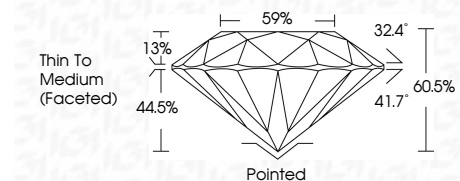
743524190  
Report verification at [igi.org](http://igi.org)



April 8, 2026  
IGI Report Number **743524190**  
Description **NATURAL DIAMOND**  
Shape and Cutting Style **ROUND BRILLIANT**  
Measurements **6.76 - 6.78 X 4.10 MM**

**GRADING RESULTS**

Carat Weight **1.12 CARAT**  
Color Grade **G**  
Clarity Grade **INTERNALLY FLAWLESS**  
Cut Grade **EXCELLENT**



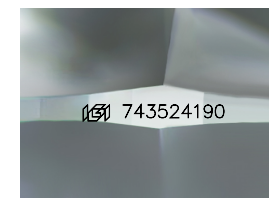
**ADDITIONAL GRADING INFORMATION**

Polish **EXCELLENT**  
Symmetry **EXCELLENT**  
Fluorescence **NONE**  
Inscription(s) **IGI 743524190**



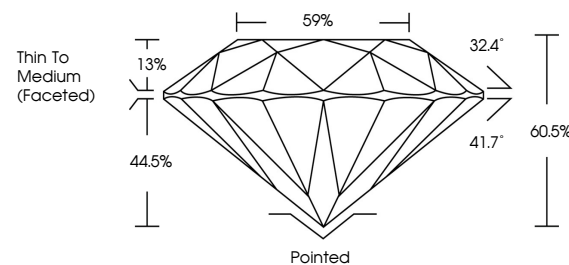
**IGI**

April 8, 2026  
IGI Report No 743524190  
**ROUND BRILLIANT**  
6.76 - 6.78 X 4.10 MM  
Carat Weight **1.12 CARAT**  
Color Grade **G**  
Clarity Grade **IF**  
Cut Grade **EXCELLENT**  
Depth **60.5%**  
Table **59%**  
Crown Height **13%**  
Crown Angle **32.4°**  
Pavilion Angle **41.7°**  
Total Depth **60.5%**  
Thin To Medium (Faceted)  
Culet **Pointed**  
Polish **EXCELLENT**  
Symmetry **EXCELLENT**  
Fluorescence **NONE**  
Inscriptions(s) **IGI 743524190**

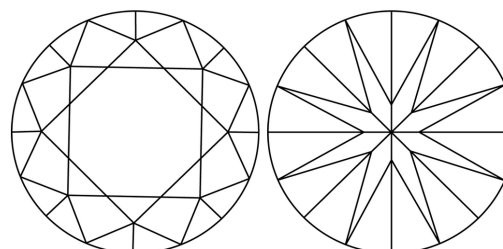


Sample Image Used

**PROPORTIONS**



**CLARITY CHARACTERISTICS**



**KEY TO SYMBOLS**

Red symbols indicate internal characteristics.  
Green symbols indicate external characteristics.

**COLOR**

D - F	G - J	K - M	N - R	S - Z	FANCY
Colorless	Near Colorless	Slightly Tinted	Very Light Color	Light Color	

**CLARITY**

FL	IF	VVS <sup>1-2</sup>	VS <sup>1-2</sup>	SI <sup>1-2</sup>	I <sup>1-3</sup>
Flawless	Internally Flawless	Very Very Slightly Included	Very Slightly Included	Slightly Included	Included

