



ELECTRONIC COPY

743524040
Report verification at igi.org

DIAMOND REPORT

March 12, 2026
IGI Report Number **743524040**
Description **NATURAL DIAMOND**
Shape and Cutting Style **ROUND BRILLIANT**
Measurements **7.95 - 8.01 X 5.02 MM**

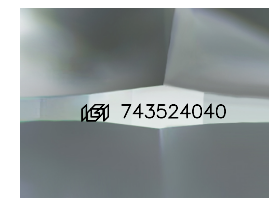
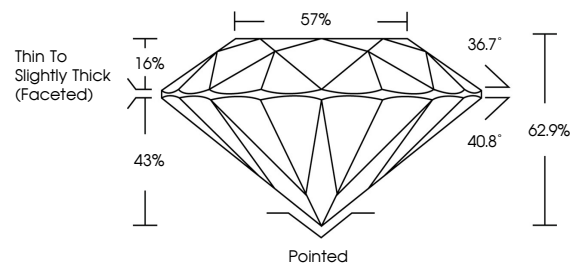
GRADING RESULTS

Carat Weight **2.00 CARATS**
Color Grade **G**
Clarity Grade **VS 2**
Cut Grade **EXCELLENT**

ADDITIONAL GRADING INFORMATION

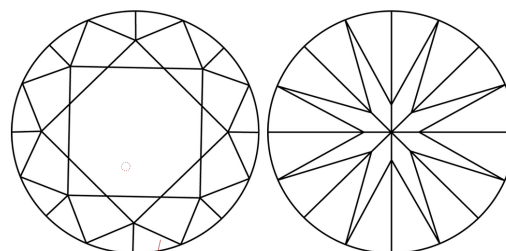
Polish **EXCELLENT**
Symmetry **EXCELLENT**
Fluorescence **NONE**
Inscription(s) **743524040**

PROPORTIONS



Sample Image Used

CLARITY CHARACTERISTICS



KEY TO SYMBOLS

Red symbols indicate internal characteristics.
Green symbols indicate external characteristics.

COLOR

D - F	G - J	K - M	N - R	S - Z	FANCY
Colorless	Near Colorless	Slightly Tinted	Very Light Color	Light Color	

CLARITY

FL	IF	VVS 1-2	VS 1-2	SI 1-2	I 1-3
Flawless	Internally Flawless	Very Very Slightly Included	Very Slightly Included	Slightly Included	Included



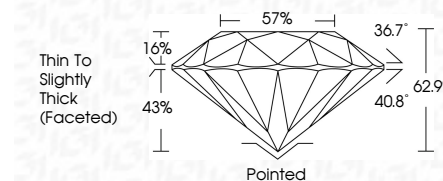
March 12, 2026
IGI Report Number **743524040**
Description **NATURAL DIAMOND**
Shape and Cutting Style **ROUND BRILLIANT**
Measurements **7.95 - 8.01 X 5.02 MM**

GRADING RESULTS

Carat Weight **2.00 CARATS**
Color Grade **G**
Clarity Grade **VS 2**
Cut Grade **EXCELLENT**

ADDITIONAL GRADING INFORMATION

Polish **EXCELLENT**
Symmetry **EXCELLENT**
Fluorescence **NONE**
Inscription(s) **743524040**



IGI

March 12, 2026
IGI Report No 743524040
ROUND BRILLIANT
2.00 CARATS
Color Grade **G**
Clarity Grade **VS 2**
Depth **EXCELLENT**
Table **62.9%**
Girdle **57%**
Thin To Slightly Thick (Faceted)
Culet **Pointed**
Polish **EXCELLENT**
Symmetry **EXCELLENT**
Fluorescence **NONE**
Inscriptions(s) **743524040**