



ELECTRONIC COPY

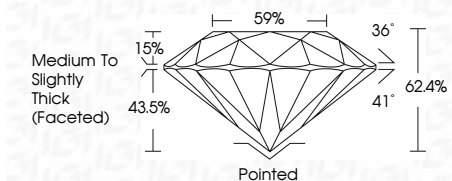
743524034
Report verification at igi.org



March 20, 2026
IGI Report Number **743524034**
Description **NATURAL DIAMOND**
Shape and Cutting Style **ROUND BRILLIANT**
Measurements **6.50 - 6.56 X 4.07 MM**

GRADING RESULTS

Carat Weight **1.08 CARAT**
Color Grade **I**
Clarity Grade **VS 1**
Cut Grade **EXCELLENT**



ADDITIONAL GRADING INFORMATION

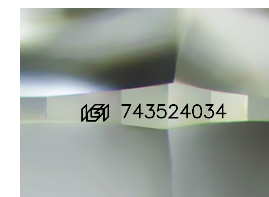
Polish **EXCELLENT**
Symmetry **EXCELLENT**
Fluorescence **NONE**
Inscription(s) **IGI 743524034**
Comments: IDEAL CUT ROUND BRILLIANT



IGI

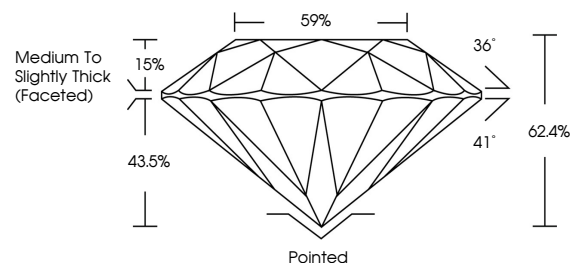
March 20, 2026
IGI Report No 743524034
ROUND BRILLIANT
6.50 - 6.56 X 4.07 MM
1.08 CARAT
Color Grade **I**
Clarity Grade **VS 1**
Depth **EXCELLENT**
Table **62.4%**
Girdle **EXCELLENT**
Medium To Slightly Thick (Faceted)
Culet **Pointed**
Polish **EXCELLENT**
Symmetry **EXCELLENT**
Fluorescence **NONE**
Inscriptions(s) **IGI 743524034**

Comments: IDEAL CUT ROUND BRILLIANT

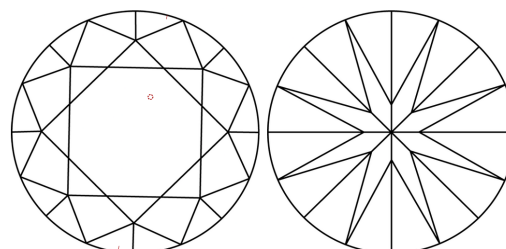


Sample Image Used

PROPORTIONS



CLARITY CHARACTERISTICS



KEY TO SYMBOLS

Red symbols indicate internal characteristics.
Green symbols indicate external characteristics.

COLOR

D - F	G - J	K - M	N - R	S - Z	FANCY
Colorless	Near Colorless	Slightly Tinted	Very Light Color	Light Color	

CLARITY

FL	IF	VVS 1-2	VS 1-2	S1 1-2	I 1-3
Flawless	Internally Flawless	Very Very Slightly Included	Very Slightly Included	Slightly Included	Included

