



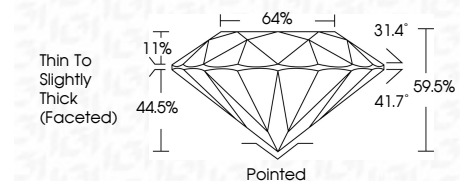
**ELECTRONIC COPY**

743523996  
Report verification at [igi.org](http://igi.org)



February 9, 2026  
IGI Report Number **743523996**  
Description **NATURAL DIAMOND**  
Shape and Cutting Style **ROUND BRILLIANT**  
Measurements **8.11 - 8.22 X 4.88 MM**

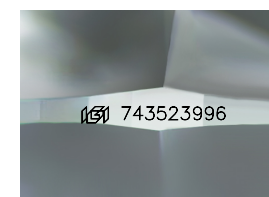
**GRADING RESULTS**  
Carat Weight **2.00 CARATS**  
Color Grade **H**  
Clarity Grade **VS 1**  
Cut Grade **VERY GOOD**



**ADDITIONAL GRADING INFORMATION**  
Polish **EXCELLENT**  
Symmetry **VERY GOOD**  
Fluorescence **NONE**  
Inscription(s) **IGI 743523996**

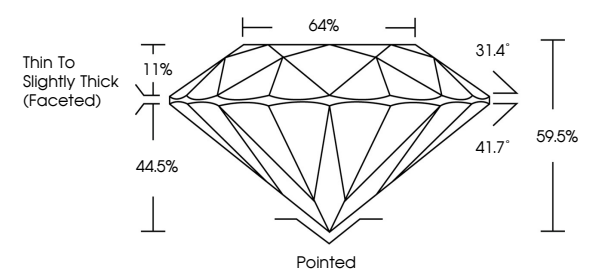


February 9, 2026  
IGI Report No 743523996  
**ROUND BRILLIANT**  
8.11 - 8.22 X 4.88 MM  
2.00 CARATS H  
Color Grade VERY GOOD  
Clarity Grade VS 1  
Depth 64.5%  
Table 64%  
Girdle Thin To Slightly Thick (Faceted)  
Culet Pointed  
Polish EXCELLENT  
Symmetry VERY GOOD  
Fluorescence NONE  
Inscriptions(s) IGI 743523996

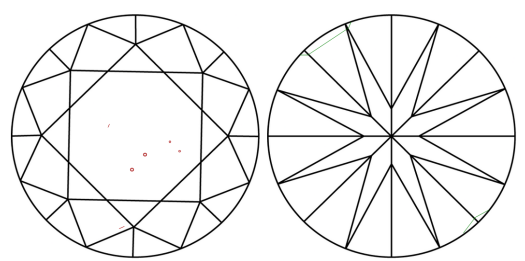


Sample Image Used

**PROPORTIONS**



**CLARITY CHARACTERISTICS**



**KEY TO SYMBOLS**  
Red symbols indicate internal characteristics.  
Green symbols indicate external characteristics.

**COLOR**

D - F	G - J	K - M	N - R	S - Z	FANCY
Colorless	Near Colorless	Slightly Tinted	Very Light Color	Light Color	

**CLARITY**

FL	IF	VVS 1-2	VS 1-2	SI 1-2	I 1-3
Flawless	Internally Flawless	Very Very Slightly Included	Very Slightly Included	Slightly Included	Included

