



ELECTRONIC COPY

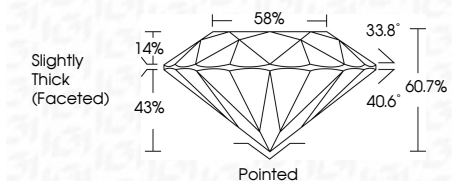
742552424
Report verification at igi.org



October 17, 2025
IGI Report Number **742552424**
Description **NATURAL DIAMOND**
Shape and Cutting Style **ROUND BRILLIANT**
Measurements **8.10 - 8.14 X 4.93 MM**

GRADING RESULTS

Carat Weight **2.01 CARATS**
Color Grade **H**
Clarity Grade **SI 2**
Cut Grade **EXCELLENT**



ADDITIONAL GRADING INFORMATION

Polish **EXCELLENT**
Symmetry **EXCELLENT**
Fluorescence **NONE**
Inscription(s) **IGI 742552424**
Comments: IDEAL CUT ROUND BRILLIANT



IGI

October 17, 2025
IGI Report No 742552424
ROUND BRILLIANT
8.10 - 8.14 X 4.93 MM
2.01 CARATS
H
SI 2
EXCELLENT
60.7%
88%
Slightly Thick (Faceted)
Pointed
EXCELLENT
EXCELLENT
NONE
IGI 742552424
Comments: IDEAL CUT ROUND BRILLIANT

DIAMOND REPORT

October 17, 2025
IGI Report Number **742552424**
Description **NATURAL DIAMOND**
Shape and Cutting Style **ROUND BRILLIANT**
Measurements **8.10 - 8.14 X 4.93 MM**

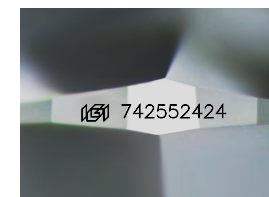
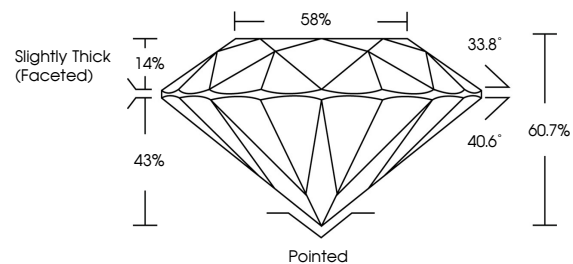
GRADING RESULTS

Carat Weight **2.01 CARATS**
Color Grade **H**
Clarity Grade **SI 2**
Cut Grade **EXCELLENT**

ADDITIONAL GRADING INFORMATION

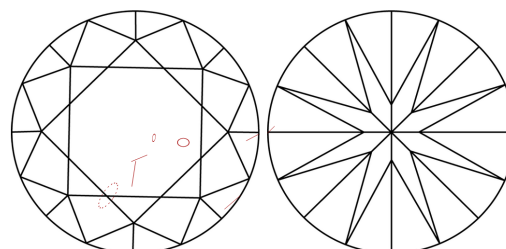
Polish **EXCELLENT**
Symmetry **EXCELLENT**
Fluorescence **NONE**
Inscription(s) **IGI 742552424**
Comments: IDEAL CUT ROUND BRILLIANT

PROPORTIONS



Sample Image Used

CLARITY CHARACTERISTICS



KEY TO SYMBOLS

Red symbols indicate internal characteristics.
Green symbols indicate external characteristics.

COLOR

| D - F | G - J | K - M | N - R | S - Z | FANCY |
|-----------|----------------|-----------------|------------------|-------------|-------|
| Colorless | Near Colorless | Slightly Tinted | Very Light Color | Light Color | |

CLARITY

| IF | VVS ¹⁻² | VS ¹⁻² | SI ¹⁻² | I ¹⁻³ |
|---------------------|-----------------------------|------------------------|-------------------|------------------|
| Internally Flawless | Very Very Slightly Included | Very Slightly Included | Slightly Included | Included |

