



November 12, 2025

IGI Report Number 741597009

CUT CORNERED RECTANGULAR

MODIFIED BRILLIANT

NATURAL DIAMOND

5.50 X 3.98 X 2.88 MM

Carat Weight	0.53 CARAT
Color Grade	K
Clarity Grade	VS 2
Cut Grade	VERY GOOD
Polish	EXCELLENT
Symmetry	EXCELLENT
Fluorescence	VERY SLIGHT
Inscription(s)	(IGI) 741597009

DIAMOND REPORT

November 12, 2025

IGI Report Number 741597009

Description NATURAL DIAMOND

Shape and Cutting Style CUT CORNERED RECTANGULAR MODIFIED BRILLIANT

Measurements 5.50 X 3.98 X 2.88 MM

GRADING RESULTS

Carat Weight 0.53 CARAT

Color Grade K

Clarity Grade VS 2

Cut Grade VERY GOOD

ADDITIONAL GRADING INFORMATION

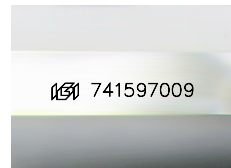
Polish EXCELLENT

Symmetry EXCELLENT

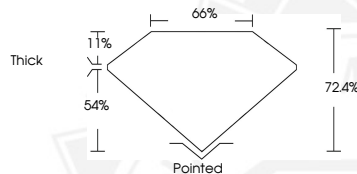
Fluorescence VERY SLIGHT

Identification Features CRYSTAL CLOUD

Inscription(s) (IGI) 741597009



Sample Image Used



November 12, 2025

IGI Report Number 741597009

CUT CORNERED RECTANGULAR

MODIFIED BRILLIANT

NATURAL DIAMOND

5.50 X 3.98 X 2.88 MM

Carat Weight	0.53 CARAT
Color Grade	K
Clarity Grade	VS 2
Cut Grade	VERY GOOD
Polish	EXCELLENT
Symmetry	EXCELLENT
Fluorescence	VERY SLIGHT
Inscription(s)	(IGI) 741597009



THIS DOCUMENT WAS PRODUCED WITH THE FOLLOWING SECURITY MEASURES: SPECIAL DOCUMENT PAPER, INK SCREENS, WATERMARK, BACKGROUND DESIGNS, HOLOGRAM AND OTHER SECURITY FEATURES NOT LISTED AND DO EXCEED DOCUMENT SECURITY INDUSTRY GUIDELINES.