



DIAMOND REPORT

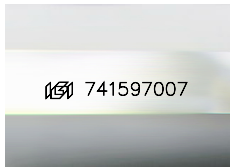
November 12, 2025
 IGI Report Number **741597007**
 Description **NATURAL DIAMOND**
 Shape and Cutting Style **CUT CORNERED RECTANGULAR MODIFIED
 BRILLIANT**
 Measurements **5.02 X 3.89 X 2.88 MM**

GRADING RESULTS

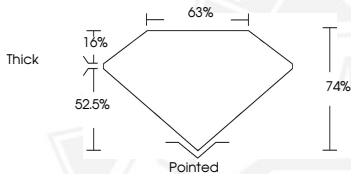
Carat Weight **0.51 CARAT**
 Color Grade **K**
 Clarity Grade **SI 1**
 Cut Grade **VERY GOOD**

ADDITIONAL GRADING INFORMATION

Polish **EXCELLENT**
 Symmetry **VERY GOOD**
 Fluorescence **VERY SLIGHT**
 Identification Features **CRYSTAL CLOUD**
 Inscription(s) **(IGI) 741597007**



Sample Image Used



November 12, 2025
 IGI Report Number **741597007**
 CUT CORNERED RECTANGULAR
 MODIFIED BRILLIANT
 NATURAL DIAMOND
5.02 X 3.89 X 2.88 MM
 Carat Weight **0.51 CARAT**
 Color Grade **K**
 Clarity Grade **SI 1**
 Cut Grade **VERY GOOD**
 Polish **EXCELLENT**
 Symmetry **VERY GOOD**
 Fluorescence **VERY SLIGHT**
 Inscription(s) **(IGI) 741597007**



November 12, 2025
 IGI Report Number **741597007**
 CUT CORNERED RECTANGULAR
 MODIFIED BRILLIANT
 NATURAL DIAMOND
5.02 X 3.89 X 2.88 MM
 Carat Weight **0.51 CARAT**
 Color Grade **K**
 Clarity Grade **SI 1**
 Cut Grade **VERY GOOD**
 Polish **EXCELLENT**
 Symmetry **VERY GOOD**
 Fluorescence **VERY SLIGHT**
 Inscription(s) **(IGI) 741597007**



THIS DOCUMENT WAS PRODUCED WITH THE FOLLOWING SECURITY MEASURES: SPECIAL DOCUMENT PAPER, INK SCREENS, WATERMARK, BACKGROUND DESIGNS, HOLOGRAM AND OTHER SECURITY FEATURES NOT LISTED AND DO EXCEED DOCUMENT SECURITY INDUSTRY GUIDELINES.