



# INTERNATIONAL GEMOLOGICAL INSTITUTE

## DIAMOND REPORT

October 17, 2025

IGI Report Number

741596401

Description

NATURAL DIAMOND

Shape and Cutting Style

ROUND BRILLIANT

Measurements

4.55 - 4.59 X 2.85 MM

### GRADING RESULTS

Carat Weight

0.36 CARAT

Color Grade

I

Clarity Grade

VVS 2

Cut Grade

EXCELLENT

### ADDITIONAL GRADING INFORMATION

Polish

EXCELLENT

Symmetry

EXCELLENT

Fluorescence

NONE

Identification Features

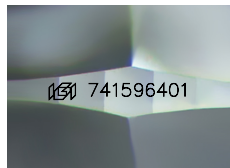
FEATHER, CLOUD

Inscription(s)

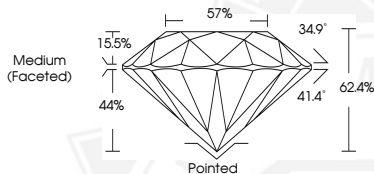
IGI 741596401

Comments: IDEAL CUT ROUND BRILLIANT

ELECTRONIC COPY



Sample Image Used



October 17, 2025

IGI Report Number 741596401

ROUND BRILLIANT

NATURAL DIAMOND

4.55 - 4.59 X 2.85 MM

Carat Weight 0.36 CARAT

Color Grade I

Clarity Grade VVS 2

Cut Grade EXCELLENT

Polish EXCELLENT

Symmetry EXCELLENT

Fluorescence NONE

Inscription(s) IGI 741596401

Comments: IDEAL CUT ROUND BRILLIANT



October 17, 2025

IGI Report Number 741596401

ROUND BRILLIANT

NATURAL DIAMOND

4.55 - 4.59 X 2.85 MM

Carat Weight 0.36 CARAT

Color Grade I

Clarity Grade VVS 2

Cut Grade EXCELLENT

Polish EXCELLENT

Symmetry EXCELLENT

Fluorescence NONE

Inscription(s) IGI 741596401

Comments: IDEAL CUT ROUND BRILLIANT



THIS DOCUMENT WAS PRODUCED WITH THE FOLLOWING SECURITY MEASURES: SPECIAL DOCUMENT PAPER, INK SCREENS, WATERMARK, BACKGROUND DESIGNS, HOLOGRAM AND OTHER SECURITY FEATURES NOT LISTED AND DO EXCEED DOCUMENT SECURITY INDUSTRY GUIDELINES.

For terms & conditions and to verify this report, please visit [www.igi.org](http://www.igi.org)