



ELECTRONIC COPY

741595219
Report verification at igi.org



November 19, 2025
IGI Report Number **741595219**
Description **NATURAL DIAMOND**
Shape and Cutting Style **EMERALD CUT**
Measurements **7.80 X 5.45 X 3.75 MM**
GRADING RESULTS
Carat Weight **1.51 CARAT**
Color Grade **J**
Clarity Grade **VS 2**
Cut Grade **VERY GOOD**

DIAMOND REPORT

November 19, 2025
IGI Report Number **741595219**
Description **NATURAL DIAMOND**
Shape and Cutting Style **EMERALD CUT**
Measurements **7.80 X 5.45 X 3.75 MM**

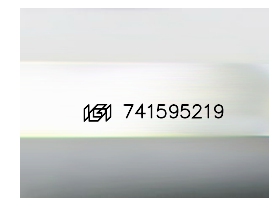
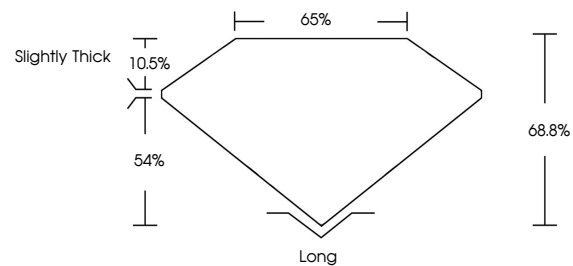
GRADING RESULTS

Carat Weight **1.51 CARAT**
Color Grade **J**
Clarity Grade **VS 2**
Cut Grade **VERY GOOD**

ADDITIONAL GRADING INFORMATION

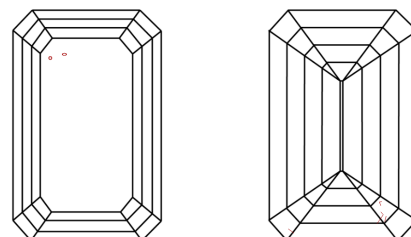
Polish **EXCELLENT**
Symmetry **EXCELLENT**
Fluorescence **VERY SLIGHT**
Inscription(s) **741595219**

PROPORTIONS



Sample Image Used

CLARITY CHARACTERISTICS



KEY TO SYMBOLS

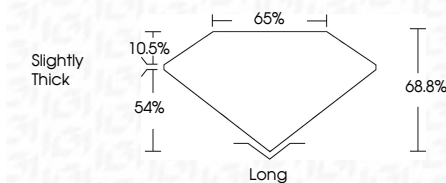
Red symbols indicate internal characteristics.
Green symbols indicate external characteristics.

COLOR

D - F	G - J	K - M	N - R	S - Z	FANCY
Colorless	Near Colorless	Slightly Tinted	Very Light Color	Light Color	

CLARITY

IF	VVS ¹⁻²	VS ¹⁻²	SI ¹⁻²	I ¹⁻³
Internally Flawless	Very Very Slightly Included	Very Slightly Included	Slightly Included	Included



ADDITIONAL GRADING INFORMATION

Polish **EXCELLENT**
Symmetry **EXCELLENT**
Fluorescence **VERY SLIGHT**
Inscription(s) **741595219**



IGI



November 19, 2025	1.51 CARAT	J	VS 2	68.8%	65%	Slightly Thick	Long
IGI Report No 741595219	7.80 X 5.45 X 3.75 MM	EMERALD CUT	VERY GOOD	EXCELLENT	EXCELLENT	VERY SLIGHT	EXCELLENT
	Carat Weight	Color Grade	Clarity Grade	Cut Grade	Depth	Table	Grade
	Polish	Symmetry	Fluorescence	Inscription(s)			