



ELECTRONIC COPY

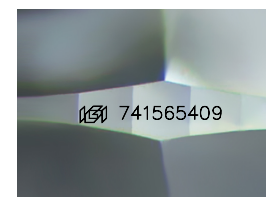
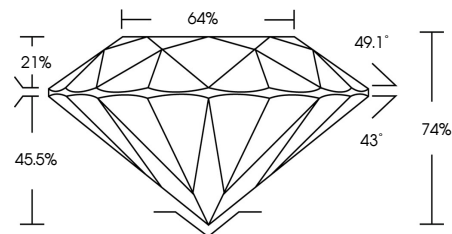
741565409
Report verification at igi.org



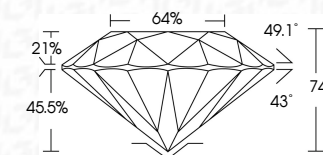
November 14, 2025
IGI Report Number **741565409**
Description **NATURAL DIAMOND**
Shape and Cutting Style **ROUND BRILLIANT**
Measurements **9.07 - 9.21 X 6.77 MM**
GRADING RESULTS
Carat Weight **3.87 CARATS**
Color Grade **NATURAL FANCY BLACK**

November 14, 2025
IGI Report Number **741565409**
Description **NATURAL DIAMOND**
Shape and Cutting Style **ROUND BRILLIANT**
Measurements **9.07 - 9.21 X 6.77 MM**
GRADING RESULTS
Carat Weight **3.87 CARATS**
Color Grade **NATURAL FANCY BLACK**
ADDITIONAL GRADING INFORMATION
Fluorescence **NONE**
Inscription(s) **741565409**

PROPORTIONS



Sample Image Used



COLOR

| D - F | G - J | K - M | N - R | S - Z | FANCY |
|-----------|----------------|-----------------|------------------|-------------|-------|
| Colorless | Near Colorless | Slightly Tinted | Very Light Color | Light Color | |

CLARITY

| IF | VVS ¹⁻² | VS ¹⁻² | SI ¹⁻² | I ¹⁻³ |
|---------------------|-----------------------------|------------------------|-------------------|------------------|
| Internally Flawless | Very Very Slightly Included | Very Slightly Included | Slightly Included | Included |

ADDITIONAL GRADING INFORMATION

Fluorescence **NONE**
Inscription(s) **741565409**



IGI



November 14, 2025
IGI Report No 741565409
ROUND BRILLIANT
Carat Weight **3.87 CARATS**
Color Grade **NATURAL FANCY BLACK**
Depth **74%**
Table **64%**
Culet **NONE**
Fluorescence
Inscriptions(s) **741565409**