



**ELECTRONIC COPY**

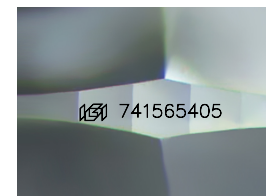
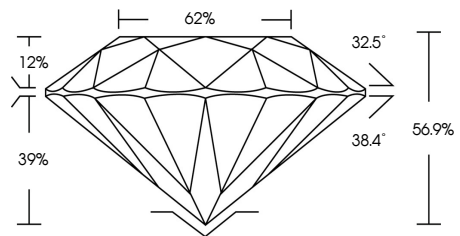
741565405  
Report verification at [igi.org](http://igi.org)



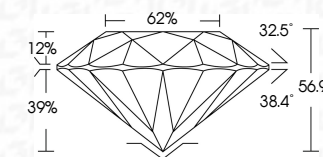
November 14, 2025  
IGI Report Number **741565405**  
Description **NATURAL DIAMOND**  
Shape and Cutting Style **ROUND BRILLIANT**  
Measurements **7.80 - 7.85 X 4.46 MM**  
**GRADING RESULTS**  
Carat Weight **1.78 CARAT**  
Color Grade **NATURAL FANCY BLACK**

November 14, 2025  
IGI Report Number **741565405**  
Description **NATURAL DIAMOND**  
Shape and Cutting Style **ROUND BRILLIANT**  
Measurements **7.80 - 7.85 X 4.46 MM**  
**GRADING RESULTS**  
Carat Weight **1.78 CARAT**  
Color Grade **NATURAL FANCY BLACK**  
**ADDITIONAL GRADING INFORMATION**  
Fluorescence **NONE**  
Inscription(s) **741565405**

**PROPORTIONS**



Sample Image Used



**COLOR**

D - F	G - J	K - M	N - R	S - Z	FANCY
Colorless	Near Colorless	Slightly Tinted	Very Light Color	Light Color	

**CLARITY**

IF	VVS <sup>1-2</sup>	VS <sup>1-2</sup>	SI <sup>1-2</sup>	I <sup>1-3</sup>
Internally Flawless	Very Very Slightly Included	Very Slightly Included	Slightly Included	Included

**ADDITIONAL GRADING INFORMATION**

Fluorescence **NONE**  
Inscription(s) **741565405**



**IGI**



November 14, 2025  
IGI Report No 741565405  
**ROUND BRILLIANT**  
Carat Weight **1.78 CARAT**  
Color Grade **NATURAL FANCY BLACK**  
Depth **56.9%**  
Table **62%**  
Culet **NONE**  
Fluorescence **NONE**  
Inscriptions(s) **741565405**