



**ELECTRONIC COPY**

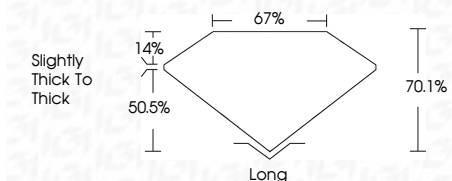
741565357  
Report verification at [igi.org](http://igi.org)



November 28, 2025  
IGI Report Number **741565357**  
Description **NATURAL DIAMOND**  
Shape and Cutting Style **EMERALD CUT**  
Measurements **6.49 X 4.61 X 3.23 MM**

**GRADING RESULTS**

Carat Weight **1.00 CARAT**  
Color Grade **I**  
Clarity Grade **VVS 1**  
Cut Grade **VERY GOOD**



**ADDITIONAL GRADING INFORMATION**

Polish **EXCELLENT**  
Symmetry **EXCELLENT**  
Fluorescence **NONE**  
Inscription(s) **(IGI) 741565357**



**IGI**

November 28, 2025  
IGI Report No 741565357  
**EMERALD CUT**  
Carat Weight **1.00 CARAT**  
Color Grade **I**  
Clarity Grade **VVS 1**  
Cut Grade **VERY GOOD**  
Depth **50.5%**  
Table **14%**  
Girdle **67%**  
Culet **Slightly thick to thick**  
Polish **EXCELLENT**  
Symmetry **EXCELLENT**  
Fluorescence **NONE**  
Inscription(s) **(IGI) 741565357**

**DIAMOND REPORT**

November 28, 2025  
IGI Report Number **741565357**  
Description **NATURAL DIAMOND**  
Shape and Cutting Style **EMERALD CUT**  
Measurements **6.49 X 4.61 X 3.23 MM**

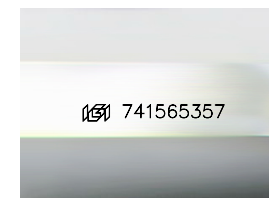
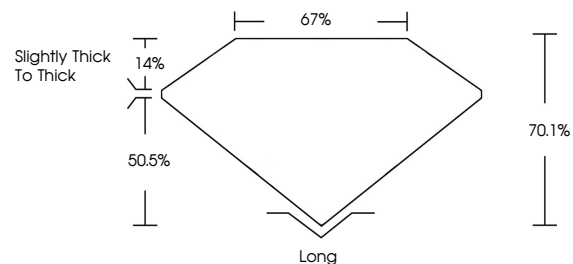
**GRADING RESULTS**

Carat Weight **1.00 CARAT**  
Color Grade **I**  
Clarity Grade **VVS 1**  
Cut Grade **VERY GOOD**

**ADDITIONAL GRADING INFORMATION**

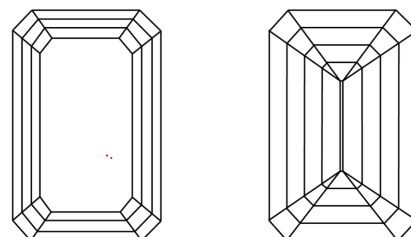
Polish **EXCELLENT**  
Symmetry **EXCELLENT**  
Fluorescence **NONE**  
Inscription(s) **(IGI) 741565357**

**PROPORTIONS**



Sample Image Used

**CLARITY CHARACTERISTICS**



**KEY TO SYMBOLS**

Red symbols indicate internal characteristics.  
Green symbols indicate external characteristics.

**COLOR**

D - F	G - J	K - M	N - R	S - Z	FANCY
Colorless	Near Colorless	Slightly Tinted	Very Light Color	Light Color	

**CLARITY**

FL	IF	VVS 1-2	VS 1-2	SI 1-2	I 1-3
Flawless	Internally Flawless	Very Very Slightly Included	Very Slightly Included	Slightly Included	Included

