



**ELECTRONIC COPY**

## DIAMOND REPORT

October 29, 2025	
IGI Report Number	741564819
Description	NATURAL DIAMOND
Shape and Cutting Style	ROUND BRILLIANT
Measurements	9.16 - 9.20 X 5.78 MM

## GRADING RESULTS

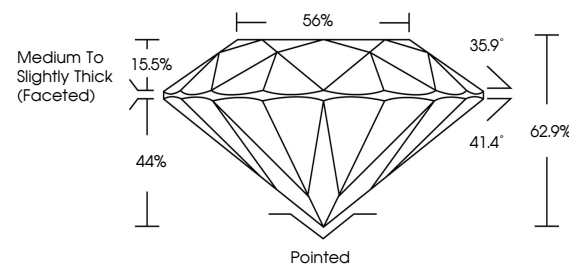
Carat Weight	3.00 CARATS
Color Grade	F
Clarity Grade	SI 2
Cut Grade	EXCELLENT

### ADDITIONAL GRADING INFORMATION

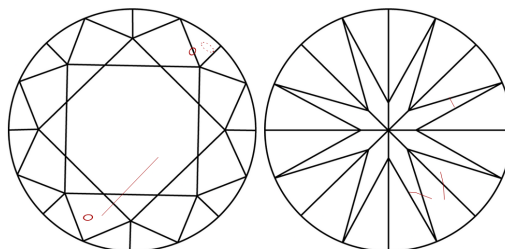
Polish	EXCELLENT
Symmetry	EXCELLENT
Fluorescence	SLIGHT
Inscription(s)	131 741564819

741564819  
Report verification at [igi.org](https://igi.org)

## PROPORTIONS

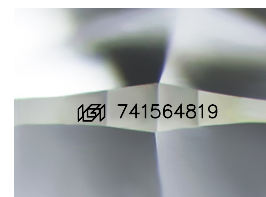


## CLARITY CHARACTERISTICS



### KEY TO SYMBOLS

Red symbols indicate internal characteristics.  
Green symbols indicate external characteristics.



Sample Image Used

**COLOR**

D - F	G - J	K - M	N - R	S - Z	FANCY
Colorless	Near Colorless	Slightly Tinted	Very Light Color	Light Color	

## CLARITY

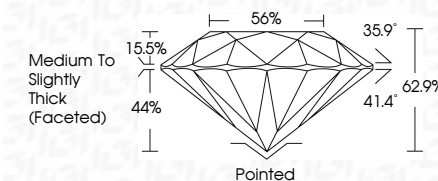
IF	VVS <sup>1-2</sup>	VS <sup>1-2</sup>	SI <sup>1-2</sup>	I <sup>1-3</sup>
Internally Flawless	Very Very Slightly Included	Very Slightly Included	Slightly Included	Included



October 29, 2025	
IGI Report Number	741564819
Description	NATURAL DIAMOND
Shape and Cutting Style	ROUND BRILLIANT
Measurements	9.16 - 9.20 X 5.78 MM

## GRADING RESULTS

Carat Weight	3.00 CARATS
Color Grade	F
Clarity Grade	SI 2
Cut Grade	EXCELLENT



### ADDITIONAL GRADING INFORMATION

Polish	EXCELLENT
Symmetry	EXCELLENT
Fluorescence	SLIGHT
Inscription(s)	15741564819



IG



© IGI 2020, International Gemological Institute

FD - 10 20



THIS DOCUMENT WAS PRODUCED WITH THE FOLLOWING SECURITY MEASURES: SPECIAL DOCUMENT PAPER, INK SCREENS, WATERMARK, BACKGROUND DESIGNS, HOLOGRAM AND OTHER SECURITY FEATURES NOT LISTED AND DO EXCEED DOCUMENT SECURITY INDUSTRY GUIDELINE

**www.igi.org**

October 29, 2025  
 IGI Report No 741564819  
 BOUND BRILLIANT

12.16 - 9.20 X 5.75 MM	Carat Weight	3.00 CARATS
	Color Grade	F
	Clarity Grade	SI 2
	Cut Grade	EXCELLENT
	Depth	62.9%
	Table	56%
	Grade	Medium to Slightly Thick (Faceted)
	Culet	Pointed
	Polish	EXCELLENT
	Symmetry	EXCELLENT
	Fluorescence	SLIGHT
	Color Notes	see 7.115.6.19