

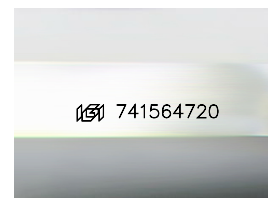
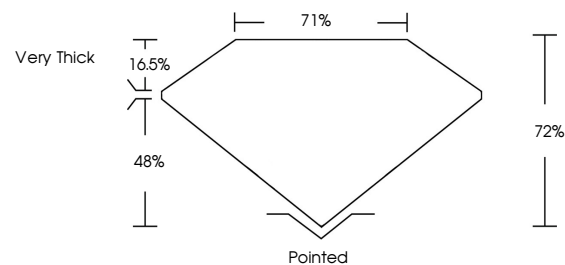


**ELECTRONIC COPY**

## DIAMOND REPORT

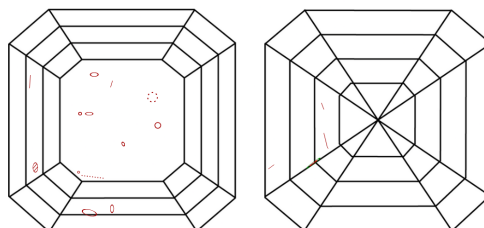
741564720  
Report verification at [igi.org](https://igi.org)

## PROPORTIONS



Sample Image Used

## CLARITY CHARACTERISTICS



## KEY TO SYMBOLS

Red symbols indicate internal characteristics.  
Green symbols indicate external characteristics.

**COLOR**

D - F	G - J	K - M	N - R	S - Z	FANCY
Colorless	Near Colorless	Slightly Tinted	Very Light Color	Light Color	

## CLARITY

IF	VVS <sup>1-2</sup>	VS <sup>1-2</sup>	SI <sup>1-2</sup>	I <sup>1-3</sup>
Internally Flawless	Very Very Slightly Included	Very Slightly Included	Slightly Included	Included

## DIAMOND REPORT



October 28, 2025

IGI Report Number 741564720

Description	NATURAL DIAMOND
-------------	-----------------

Shape and Cutting Style **SQUARE EMERALD CUT**

Measurements **5.30 X 5.15 X 3.71 MM**

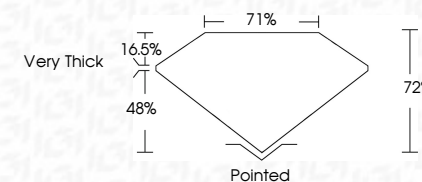
## GRADING RESULTS

Carat Weight 1.00 CARAT

Color Grade	H
-------------	---

Clarity Grade SI 1

Cut Grade **VERY GOOD**



### ADDITIONAL GRADING INFORMATION

Polish **EXCELLENT**Symmetry **EXCELLENT**Fluorescence **NONE**Inscription(s)  741564720

October 28, 2025	Carat Weight	1.00 CARAT
GI Report No 741564720	Color Grade	H
SQUARE EMERALD CUT	Clarity Grade	S I
3.50 X 3.5 X 3.71 MM	Depth	72%
	Table	71%
	Grade	Very Thick
	Culet	Pointed
	Polish	EXCELLENT
	Symmetry	EXCELLENT
	Fluorescence	NONE

© IGI 2020, International Gemological Institute

FD - 10 20



THIS DOCUMENT WAS PRODUCED WITH THE FOLLOWING SECURITY MEASURES: SPECIAL DOCUMENT PAPER, INK SCREENS, WATERMARK, BACKGROUND DESIGNS, HOLOGRAM AND OTHER SECURITY FEATURES NOT LISTED AND DO EXCEED DOCUMENT SECURITY INDUSTRY GUIDELINES



**www.igi.org**