



INTERNATIONAL GEMOLOGICAL INSTITUTE

DIAMOND REPORT

December 4, 2025

IGI Report Number 741552750

Description

NATURAL DIAMOND

Shape and Cutting Style

ROUND BRILLIANT

Measurements

4.95 - 4.97 X 3.08 MM

GRADING RESULTS

Carat Weight

0.46 CARAT

Color Grade

F

Clarity Grade

VS 1

Cut Grade

EXCELLENT

ADDITIONAL GRADING INFORMATION

Polish

EXCELLENT

Symmetry

EXCELLENT

Fluorescence

VERY SLIGHT

Identification Features

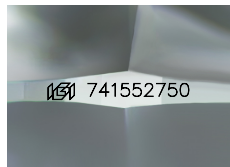
FEATHER, PINPOINT

Inscription(s)

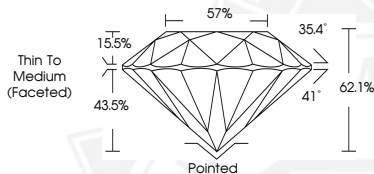
IGI 741552750

Comments: IDEAL CUT ROUND BRILLIANT

ELECTRONIC COPY



Sample Image Used



THIS DOCUMENT WAS PRODUCED WITH THE FOLLOWING SECURITY MEASURES: SPECIAL DOCUMENT PAPER, INK SCREENS, WATERMARK, BACKGROUND DESIGNS, HOLOGRAM AND OTHER SECURITY FEATURES NOT LISTED AND DO EXCEED DOCUMENT SECURITY INDUSTRY GUIDELINES.

For terms & conditions and to verify this report, please visit www.igi.org



December 4, 2025

IGI Report Number 741552750

ROUND BRILLIANT

NATURAL DIAMOND

4.95 - 4.97 X 3.08 MM

Carat Weight 0.46 CARAT

Color Grade F

Clarity Grade VS 1

Cut Grade EXCELLENT

Polish EXCELLENT

Symmetry EXCELLENT

Fluorescence VERY SLIGHT

Inscription(s) IGI 741552750

Comments: IDEAL CUT ROUND

BRILLIANT



December 4, 2025

IGI Report Number 741552750

ROUND BRILLIANT

NATURAL DIAMOND

4.95 - 4.97 X 3.08 MM

Carat Weight 0.46 CARAT

Color Grade F

Clarity Grade VS 1

Cut Grade EXCELLENT

Polish EXCELLENT

Symmetry EXCELLENT

Fluorescence VERY SLIGHT

Inscription(s) IGI 741552750

Comments: IDEAL CUT ROUND

BRILLIANT