



November 17, 2025

IGI Report Number 741551856

**ROUND BRILLIANT
NATURAL DIAMOND**
4.23 - 4.25 X 2.63 MM

Carat Weight **0.30 CARAT**
Color Grade **G**
Clarity Grade **SI 2**
Cut Grade **EXCELLENT**
Polish **EXCELLENT**
Symmetry **EXCELLENT**
Fluorescence **NONE**
Inscription(s) **IGI 741551856**

DIAMOND REPORT

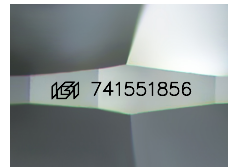
November 17, 2025
IGI Report Number **741551856**
Description **NATURAL DIAMOND**
Shape and Cutting Style **ROUND BRILLIANT**
Measurements **4.23 - 4.25 X 2.63 MM**

GRADING RESULTS

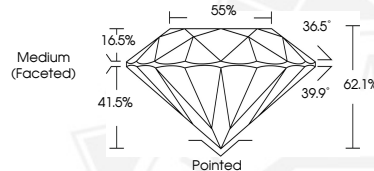
Carat Weight **0.30 CARAT**
Color Grade **G**
Clarity Grade **SI 2**
Cut Grade **EXCELLENT**

ADDITIONAL GRADING INFORMATION

Polish **EXCELLENT**
Symmetry **EXCELLENT**
Fluorescence **NONE**
Identification Features **FEATHER**
Inscription(s) **IGI 741551856**



Sample Image Used



November 17, 2025

IGI Report Number 741551856

**ROUND BRILLIANT
NATURAL DIAMOND**
4.23 - 4.25 X 2.63 MM

Carat Weight **0.30 CARAT**
Color Grade **G**
Clarity Grade **SI 2**
Cut Grade **EXCELLENT**
Polish **EXCELLENT**
Symmetry **EXCELLENT**
Fluorescence **NONE**
Inscription(s) **IGI 741551856**



THIS DOCUMENT WAS PRODUCED WITH THE FOLLOWING SECURITY MEASURES: SPECIAL DOCUMENT PAPER, INK SCREENS, WATERMARK, BACKGROUND DESIGNS, HOLOGRAM AND OTHER SECURITY FEATURES NOT LISTED AND DO EXCEED DOCUMENT SECURITY INDUSTRY GUIDELINES.