



INTERNATIONAL GEMOLOGICAL INSTITUTE

DIAMOND REPORT

October 30, 2025

IGI Report Number

741549118

Description

NATURAL DIAMOND

Shape and Cutting Style

ROUND BRILLIANT

Measurements

4.53 - 4.56 X 2.77 MM

GRADING RESULTS

Carat Weight

0.35 CARAT

Color Grade

H

Clarity Grade

VVS 2

Cut Grade

EXCELLENT

ADDITIONAL GRADING INFORMATION

Polish

EXCELLENT

Symmetry

EXCELLENT

Fluorescence

STRONG

Identification Features

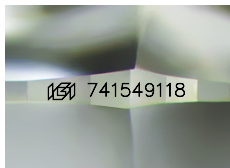
FEATHER, PINPOINT

Inscription(s)

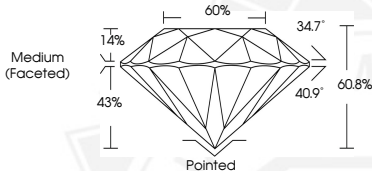
IGI 741549118

Comments: IDEAL CUT ROUND BRILLIANT

ELECTRONIC COPY



Sample Image Used



THIS DOCUMENT WAS PRODUCED WITH THE FOLLOWING SECURITY MEASURES: SPECIAL DOCUMENT PAPER, INK SCREENS, WATERMARK, BACKGROUND DESIGNS, HOLOGRAM AND OTHER SECURITY FEATURES NOT LISTED AND DO EXCEED DOCUMENT SECURITY INDUSTRY GUIDELINES.

For terms & conditions and to verify this report, please visit www.igi.org



October 30, 2025

IGI Report Number 741549118

ROUND BRILLIANT

NATURAL DIAMOND

4.53 - 4.56 X 2.77 MM

Carat Weight 0.35 CARAT

Color Grade H

Clarity Grade VVS 2

Cut Grade EXCELLENT

Polish EXCELLENT

Symmetry EXCELLENT

Fluorescence STRONG

Inscription(s) IGI 741549118

Comments: IDEAL CUT ROUND BRILLIANT



October 30, 2025

IGI Report Number 741549118

ROUND BRILLIANT

NATURAL DIAMOND

4.53 - 4.56 X 2.77 MM

Carat Weight 0.35 CARAT

Color Grade H

Clarity Grade VVS 2

Cut Grade EXCELLENT

Polish EXCELLENT

Symmetry EXCELLENT

Fluorescence STRONG

Inscription(s) IGI 741549118

Comments: IDEAL CUT ROUND BRILLIANT