



ELECTRONIC COPY

DIAMOND REPORT

October 15, 2025	
IGI Report Number	741517249
Description	NATURAL DIAMOND
Shape and Cutting Style	ROUND BRILLIANT
Measurements	7.63 - 7.70 X 4.63 MM

GRADING RESULTS

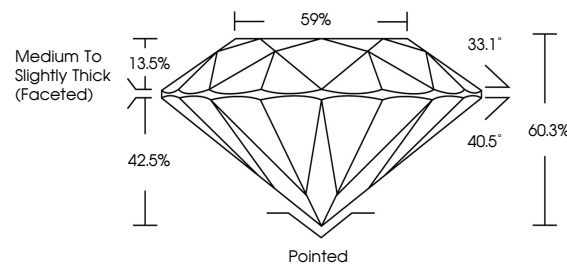
Carat Weight	1.70 CARAT
Color Grade	I
Clarity Grade	INTERNALLY FLAWLESS
Cut Grade	EXCELLENT

ADDITIONAL GRADING INFORMATION

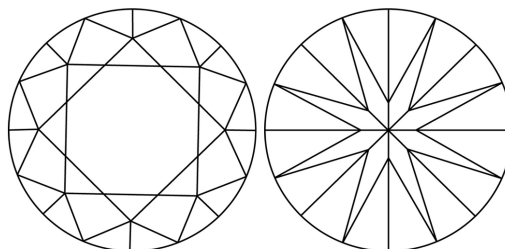
Polish	EXCELLENT
Symmetry	EXCELLENT
Fluorescence	NONE
Inscription(s)	 741517249
Comments: IDEAL CUT ROUND BRILLIANT	

741517249
Report verification at igi.org

PROPORTIONS

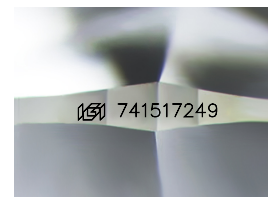


CLARITY CHARACTERISTICS



KEY TO SYMBOLS

Red symbols indicate internal characteristics.
Green symbols indicate external characteristics.



Sample Image Used

COLOR

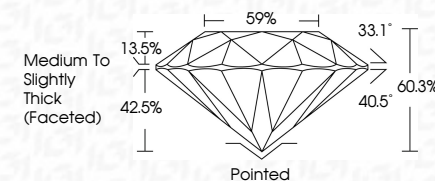
D - F	G - J	K - M	N - R	S - Z	FANCY
Colorless	Near Colorless	Slightly Tinted	Very Light Color	Light Color	

CLARITY

IF	VVS ¹⁻²	VS ¹⁻²	SI ¹⁻²	I ¹⁻³
Internally Flawless	Very Very Slightly Included	Very Slightly Included	Slightly Included	Included



October 15, 2025	
IGI Report Number	741517249
Description	NATURAL DIAMOND
Shape and Cutting Style	ROUND BRILLIANT
Measurements	7.63 - 7.70 X 4.63 MM
GRADING RESULTS	
Carat Weight	1.70 CARAT
Color Grade	I
Clarity Grade	INTERNALLY FLAWLESS
Cut Grade	EXCELLENT



ADDITIONAL GRADING INFORMATION

Polish	EXCELLENT
Symmetry	EXCELLENT
Fluorescence	NONE
Inscription(s)	 741517249
Comments: IDEAL CUT ROUND BRILLIANT	



© IGI 2020, International Gemological Institute

FD - 10 20

www.igi.org



THIS DOCUMENT WAS PRODUCED WITH THE FOLLOWING SECURITY MEASURES: SPECIAL DOCUMENT PAPER, INK SCREENS, WATERMARK, BACKGROUND DESIGNS, HOLOGRAM AND OTHER SECURITY FEATURES NOT LISTED AND DO EXCEED DOCUMENT SECURITY INDUSTRY GUIDELINE

October 15, 2025
IGI Report No 741517249
POUND BRILLIANT

7.63 - 7.70 X 4.63 MM	Carat Weight	1.70 CARAT
Color Grade	I	
Clarity Grade	IF	
Cut Grade	EXCELLENT	
Depth	60.3%	
Table	59%	
Girdle	Medium To Slightly Thick (facet=0)	
Culet	Pointed	
Polish	EXCELLENT	
Symmetry	EXCELLENT	
Fluorescence	NONE	
Report#	456 7415123 20	

Comments: