



ELECTRONIC COPY

DIAMOND REPORT

October 14, 2025	
IGI Report Number	741516056
Description	NATURAL DIAMOND
Shape and Cutting Style	ROUND BRILLIANT
Measurements	7.15 - 7.21 X 4.57 MM

GRADING RESULTS

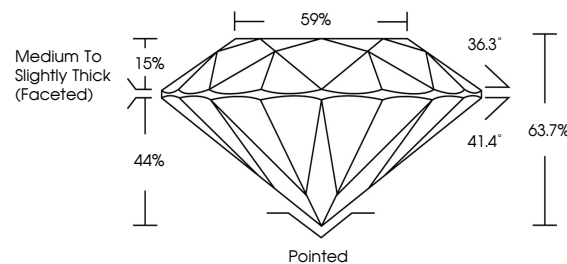
Carat Weight	1.50 CARAT
Color Grade	G
Clarity Grade	SI 2
Cut Grade	EXCELLENT

ADDITIONAL GRADING INFORMATION

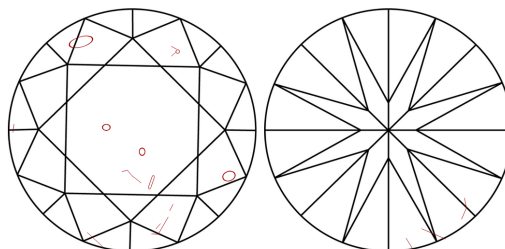
Polish	EXCELLENT
Symmetry	EXCELLENT
Fluorescence	NONE
Inscription(s)	131 741516056

741516056
Report verification at [igi.org](https://www.igi.org)

PROPORTIONS

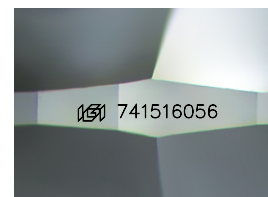


CLARITY CHARACTERISTICS



KEY TO SYMBOLS

Red symbols indicate internal characteristics.
Green symbols indicate external characteristics.



Sample Image Used

COLOR

D - F	G - J	K - M	N - R	S - Z	FANCY
Colorless	Near Colorless	Slightly Tinted	Very Light Color	Light Color	

CLARITY

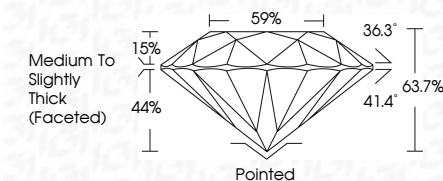
IF	VVS ¹⁻²	VS ¹⁻²	SI ¹⁻²	I ¹⁻³
Internally Flawless	Very Very Slightly Included	Very Slightly Included	Slightly Included	Included



October 14, 2025	
IGI Report Number	741516056
Description	NATURAL DIAMOND
Shape and Cutting Style	ROUND BRILLIANT
Measurements	7.15 - 7.21 X 4.57 MM

GRADING RESULTS

Carat Weight	1.50 CARAT
Color Grade	G
Clarity Grade	SI 2
Cut Grade	EXCELLENT



ADDITIONAL GRADING INFORMATION

Polish	EXCELLENT
Symmetry	EXCELLENT
Fluorescence	NONE
Inscription(s)	(13) 741516056



© IGI 2020, International Gemological Institute

FD - 10 20



THIS DOCUMENT WAS PRODUCED WITH THE FOLLOWING SECURITY MEASURES: SPECIAL DOCUMENT PAPER, INK SCREENS, WATERMARK, BACKGROUND DESIGNS, HOLOGRAM AND OTHER SECURITY FEATURES NOT LISTED AND DO EXCEED DOCUMENT SECURITY INDUSTRY GUIDELINES

www.igi.org

October 14, 2025
GI Report No 741516056
ROUND BRILLIANT

1.15 - 1.21 X 4.57 MM	Carat Weight	1.50 CARAT
Color Grade	Clarity Grade	E
Depth	Cut Grade	\$12
Table	Grade	EXCELLENT
Grade	Fluorescence	63.7%
Grade	Fluorescence	59%
Grade	Fluorescence	Medium to Slightly Thick (Fastest)
Grade	Fluorescence	Polished
Grade	Fluorescence	EXCELLENT
Grade	Fluorescence	EXCELLENT
Grade	Fluorescence	NONE
Grade	Fluorescence	near 1415/1455