



# INTERNATIONAL GEMOLOGICAL INSTITUTE

ELECTRONIC COPY

## DIAMOND REPORT

October 27, 2025

IGI Report Number

739570684

Description

NATURAL DIAMOND

Shape and Cutting Style

ROUND BRILLIANT

Measurements

5.77 - 5.82 X 3.53 MM

## GRADING RESULTS

Carat Weight

0.72 CARAT

Color Grade

J

Clarity Grade

VVS 1

Cut Grade

EXCELLENT

## ADDITIONAL GRADING INFORMATION

Polish

EXCELLENT

Symmetry

EXCELLENT

Fluorescence

VERY SLIGHT

Identification Features

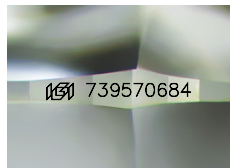
GRAINING

Inscription(s)

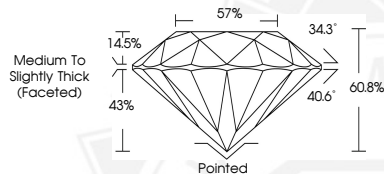
IGI 739570684

Comments: IDEAL CUT ROUND BRILLIANT

VVS1 DUE TO GRAINING



Sample Image Used



October 27, 2025

IGI Report Number 739570684

ROUND BRILLIANT

NATURAL DIAMOND

5.77 - 5.82 X 3.53 MM

Carat Weight 0.72 CARAT

Color Grade J

Clarity Grade VVS 1

Cut Grade EXCELLENT

Polish EXCELLENT

Symmetry EXCELLENT

Fluorescence VERY SLIGHT

Inscription(s) IGI 739570684

Comments: IDEAL CUT ROUND

BRILLIANT VVS1 DUE TO GRAINING



October 27, 2025

IGI Report Number 739570684

ROUND BRILLIANT

NATURAL DIAMOND

5.77 - 5.82 X 3.53 MM

Carat Weight 0.72 CARAT

Color Grade J

Clarity Grade VVS 1

Cut Grade EXCELLENT

Polish EXCELLENT

Symmetry EXCELLENT

Fluorescence VERY SLIGHT

Inscription(s) IGI 739570684

Comments: IDEAL CUT ROUND

BRILLIANT VVS1 DUE TO GRAINING



THIS DOCUMENT WAS PRODUCED WITH THE FOLLOWING SECURITY MEASURES: SPECIAL DOCUMENT PAPER, INK SCREENS, WATERMARK, BACKGROUND DESIGNS, HOLOGRAM AND OTHER SECURITY FEATURES NOT LISTED AND DO EXCEED DOCUMENT SECURITY INDUSTRY GUIDELINES.

For terms & conditions and to verify this report, please visit [www.igi.org](http://www.igi.org)