



# INTERNATIONAL GEMOLOGICAL INSTITUTE

## DIAMOND REPORT

October 15, 2025

IGI Report Number

739570508

Description

NATURAL DIAMOND

Shape and Cutting Style

ROUND BRILLIANT

Measurements

5.22 - 5.26 X 3.25 MM

## GRADING RESULTS

Carat Weight

0.55 CARAT

Color Grade

G

Clarity Grade

VVS 2

Cut Grade

EXCELLENT

## ADDITIONAL GRADING INFORMATION

Polish

EXCELLENT

Symmetry

EXCELLENT

Fluorescence

NONE

Identification Features

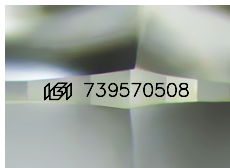
CRYSTAL, NEEDLE

Inscription(s)

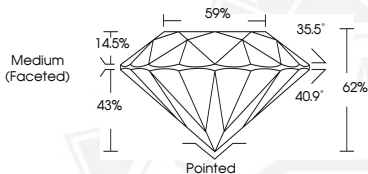
IGI 739570508

Comments: IDEAL CUT ROUND BRILLIANT

ELECTRONIC COPY



Sample Image Used



THIS DOCUMENT WAS PRODUCED WITH THE FOLLOWING SECURITY MEASURES: SPECIAL DOCUMENT PAPER, INK SCREENS, WATERMARK, BACKGROUND DESIGNS, HOLOGRAM AND OTHER SECURITY FEATURES NOT LISTED AND DO EXCEED DOCUMENT SECURITY INDUSTRY GUIDELINES.

For terms & conditions and to verify this report, please visit [www.igi.org](http://www.igi.org)



October 15, 2025

IGI Report Number 739570508

ROUND BRILLIANT

NATURAL DIAMOND

5.22 - 5.26 X 3.25 MM

Carat Weight 0.55 CARAT

Color Grade G

Clarity Grade VVS 2

Cut Grade EXCELLENT

Polish EXCELLENT

Symmetry EXCELLENT

Fluorescence NONE

Inscription(s) IGI 739570508

Comments: IDEAL CUT ROUND

BRILLIANT



October 15, 2025

IGI Report Number 739570508

ROUND BRILLIANT

NATURAL DIAMOND

5.22 - 5.26 X 3.25 MM

Carat Weight 0.55 CARAT

Color Grade G

Clarity Grade VVS 2

Cut Grade EXCELLENT

Polish EXCELLENT

Symmetry EXCELLENT

Fluorescence NONE

Inscription(s) IGI 739570508

Comments: IDEAL CUT ROUND

BRILLIANT