



**ELECTRONIC COPY**

739551449  
Report verification at [igi.org](http://igi.org)

**DIAMOND REPORT**

October 29, 2025  
IGI Report Number **739551449**  
Description **NATURAL DIAMOND**  
Shape and Cutting Style **EMERALD CUT**  
Measurements **6.70 X 4.69 X 3.16 MM**

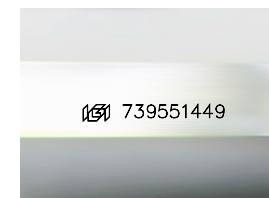
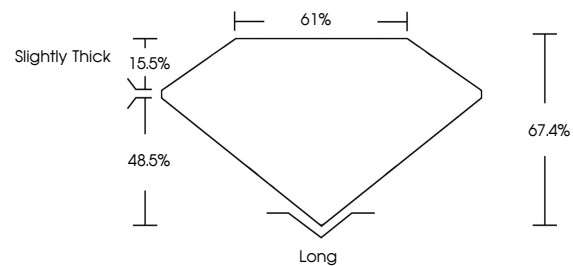
**GRADING RESULTS**

Carat Weight **1.00 CARAT**  
Color Grade **K**  
Clarity Grade **VVS 1**  
Cut Grade **VERY GOOD**

**ADDITIONAL GRADING INFORMATION**

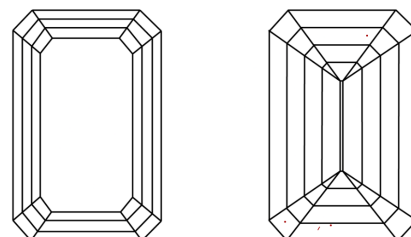
Polish **EXCELLENT**  
Symmetry **EXCELLENT**  
Fluorescence **NONE**  
Inscription(s) **739551449**

**PROPORTIONS**



Sample Image Used

**CLARITY CHARACTERISTICS**



**KEY TO SYMBOLS**

Red symbols indicate internal characteristics.  
Green symbols indicate external characteristics.

**COLOR**

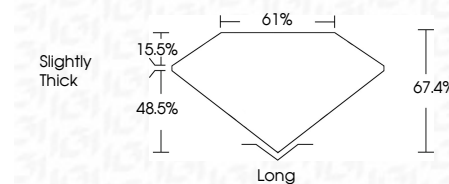
D - F	G - J	K - M	N - R	S - Z	FANCY
Colorless	Near Colorless	Slightly Tinted	Very Light Color	Light Color	

**CLARITY**

IF	VVS <sup>1-2</sup>	VS <sup>1-2</sup>	SI <sup>1-2</sup>	I <sup>1-3</sup>
Internally Flawless	Very Very Slightly Included	Very Slightly Included	Slightly Included	Included



October 29, 2025  
IGI Report Number **739551449**  
Description **NATURAL DIAMOND**  
Shape and Cutting Style **EMERALD CUT**  
Measurements **6.70 X 4.69 X 3.16 MM**  
**GRADING RESULTS**  
Carat Weight **1.00 CARAT**  
Color Grade **K**  
Clarity Grade **VVS 1**  
Cut Grade **VERY GOOD**



**ADDITIONAL GRADING INFORMATION**

Polish **EXCELLENT**  
Symmetry **EXCELLENT**  
Fluorescence **NONE**  
Inscription(s) **739551449**



**IGI**



October 29, 2025  
IGI Report No **739551449**  
**EMERALD CUT**  
6.70 X 4.69 X 3.16 MM  
Carat Weight **1.00 CARAT**  
Color Grade **K**  
Clarity Grade **VVS 1**  
Cut Grade **VERY GOOD**  
Depth **67.4%**  
Table **61%**  
Girdle **Slightly Thick**  
Culet **Long**  
Polish **EXCELLENT**  
Symmetry **EXCELLENT**  
Fluorescence **NONE**  
Inscription(s) **739551449**