



ELECTRONIC COPY

739551347
Report verification at igi.org



October 27, 2025

IGI Report Number **739551347**

Description **NATURAL DIAMOND**

Shape and Cutting Style **PRINCESS CUT**

Measurements **6.81 X 6.66 X 4.49 MM**

GRADING RESULTS

Carat Weight **1.70 CARAT**

Color Grade **I**

Clarity Grade **VS 1**

Cut Grade **EXCELLENT**

October 27, 2025
IGI Report Number **739551347**
Description **NATURAL DIAMOND**
Shape and Cutting Style **PRINCESS CUT**
Measurements **6.81 X 6.66 X 4.49 MM**

GRADING RESULTS

Carat Weight **1.70 CARAT**

Color Grade **I**

Clarity Grade **VS 1**

Cut Grade **EXCELLENT**

ADDITIONAL GRADING INFORMATION

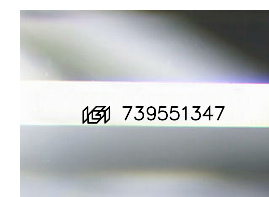
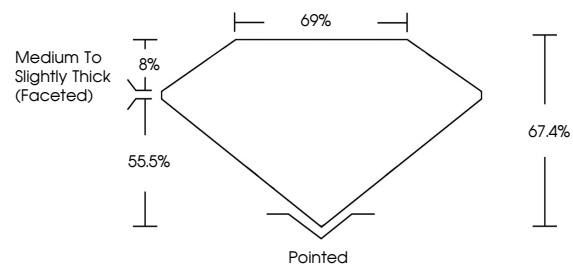
Polish **EXCELLENT**

Symmetry **EXCELLENT**

Fluorescence **NONE**

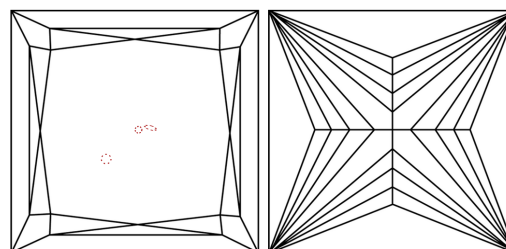
Inscription(s) **739551347**

PROPORTIONS



Sample Image Used

CLARITY CHARACTERISTICS



KEY TO SYMBOLS

Red symbols indicate internal characteristics.
Green symbols indicate external characteristics.

COLOR

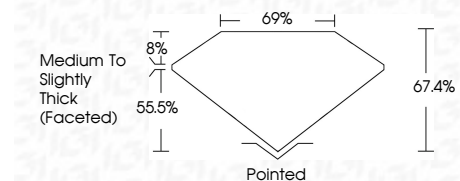
D - F G - J K - M N - R S - Z FANCY

Colorless Near Colorless Slightly Tinted Very Light Color Light Color

CLARITY

IF VS ¹⁻² VS ¹⁻² SI ¹⁻² I ¹⁻³

Internally Flawless Very Very Slightly Included Very Slightly Included Slightly Included Included



ADDITIONAL GRADING INFORMATION

Polish **EXCELLENT**

Symmetry **EXCELLENT**

Fluorescence **NONE**

Inscription(s) **739551347**



IGI



October 27, 2025
IGI Report No. 739551347
PRINCESS CUT
6.81 X 6.66 X 4.49 MM
1.70 CARAT
Color Grade **I**
Clarity Grade **VS 1**
Cut Grade **EXCELLENT**
Depth **67.4%**
Table **69%**
Girdle **Medium To Slightly Thick (Faceted)**
Culet **Pointed**
Polish **EXCELLENT**
Symmetry **EXCELLENT**
Fluorescence **NONE**
Inscription(s) **739551347**