



**ELECTRONIC COPY**

739551267  
Report verification at [igi.org](http://igi.org)



October 14, 2025

IGI Report Number **739551267**

Description **NATURAL DIAMOND**

Shape and Cutting Style **EMERALD CUT**

Measurements **8.00 X 5.50 X 3.70 MM**

**GRADING RESULTS**

Carat Weight **1.70 CARAT**

Color Grade **J**

Clarity Grade **SI 2**

Cut Grade **VERY GOOD**

**DIAMOND REPORT**

October 14, 2025

IGI Report Number **739551267**

Description **NATURAL DIAMOND**

Shape and Cutting Style **EMERALD CUT**

Measurements **8.00 X 5.50 X 3.70 MM**

**GRADING RESULTS**

Carat Weight **1.70 CARAT**

Color Grade **J**

Clarity Grade **SI 2**

Cut Grade **VERY GOOD**

**ADDITIONAL GRADING INFORMATION**

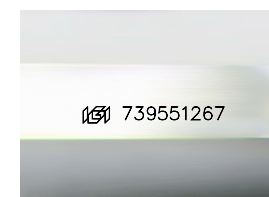
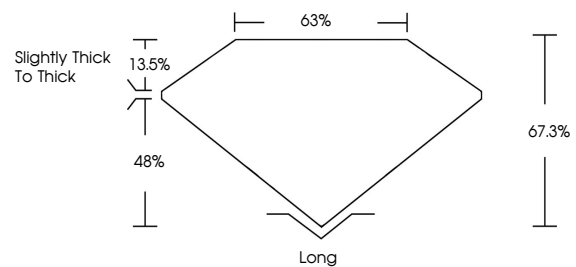
Polish **EXCELLENT**

Symmetry **EXCELLENT**

Fluorescence **NONE**

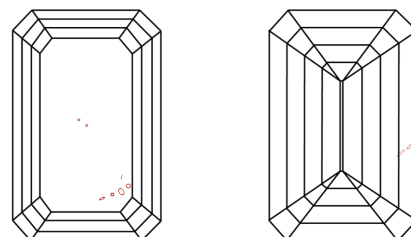
Inscription(s) **739551267**

**PROPORTIONS**



Sample Image Used

**CLARITY CHARACTERISTICS**



**KEY TO SYMBOLS**

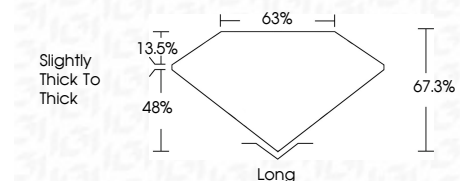
Red symbols indicate internal characteristics.  
Green symbols indicate external characteristics.

**COLOR**

D - F	G - J	K - M	N - R	S - Z	FANCY
Colorless	Near Colorless	Slightly Tinted	Very Light Color	Light Color	

**CLARITY**

IF	VVS <sup>1-2</sup>	VS <sup>1-2</sup>	SI <sup>1-2</sup>	I <sup>1-3</sup>
Internally Flawless	Very Very Slightly Included	Very Slightly Included	Slightly Included	Included



**ADDITIONAL GRADING INFORMATION**

Polish **EXCELLENT**

Symmetry **EXCELLENT**

Fluorescence **NONE**

Inscription(s) **739551267**



**IGI**



October 14, 2025  
IGI Report No. 739551267  
**EMERALD CUT**

8.00 X 5.50 X 3.70 MM

Carat Weight **1.70 CARAT**

Color Grade **J**

Clarity Grade **SI 2**

Cut Grade **VERY GOOD**

Depth **67.3%**

Table **63%**

Girdle **Slightly thick to Thick**

Color **EXCELLENT**

Polish **EXCELLENT**

Symmetry **EXCELLENT**

Fluorescence **NONE**

Inscription(s) **739551267**