



ELECTRONIC COPY

739526005
Report verification at igi.org



October 16, 2025

IGI Report Number **739526005**

Description **NATURAL DIAMOND**

Shape and Cutting Style **EMERALD CUT**

Measurements **10.68 X 7.69 X 5.78 MM**

GRADING RESULTS

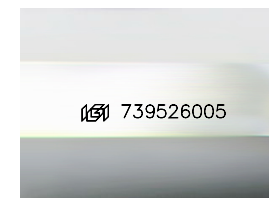
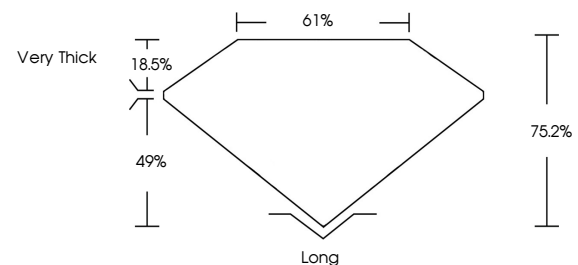
Carat Weight **5.03 CARATS**

Color Grade **I**

Clarity Grade **VS 1**

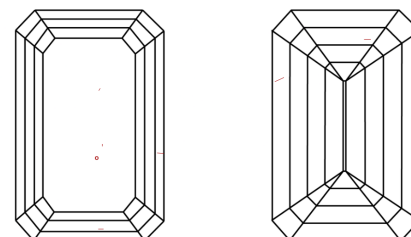
Cut Grade **VERY GOOD**

PROPORTIONS



Sample Image Used

CLARITY CHARACTERISTICS



KEY TO SYMBOLS

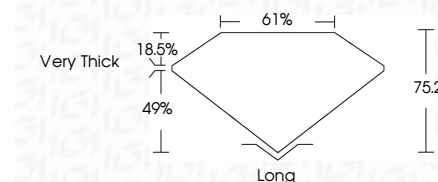
Red symbols indicate internal characteristics.
Green symbols indicate external characteristics.

COLOR

D - F	G - J	K - M	N - R	S - Z	FANCY
Colorless	Near Colorless	Slightly Tinted	Very Light Color	Light Color	

CLARITY

IF	VVS ¹⁻²	VS ¹⁻²	SI ¹⁻²	I ¹⁻³
Internally Flawless	Very Very Slightly Included	Very Slightly Included	Slightly Included	Included



ADDITIONAL GRADING INFORMATION

Polish **EXCELLENT**

Symmetry **VERY GOOD**

Fluorescence **NONE**

Inscription(s) **IGI 739526005**

October 16, 2025
IGI Report Number **739526005**
Description **NATURAL DIAMOND**
Shape and Cutting Style **EMERALD CUT**
Measurements **10.68 X 7.69 X 5.78 MM**

GRADING RESULTS

Carat Weight **5.03 CARATS**

Color Grade **I**

Clarity Grade **VS 1**

Cut Grade **VERY GOOD**

ADDITIONAL GRADING INFORMATION

Polish **EXCELLENT**

Symmetry **VERY GOOD**

Fluorescence **NONE**

Inscription(s) **IGI 739526005**



IGI



October 16, 2025
IGI Report No. 739526005
EMERALD CUT
10.68 X 7.69 X 5.78 MM
5.03 CARATS
I
Color Grade
VS 1
VERY GOOD
76.2%
61%
Very Thick
Long
EXCELLENT
VERY GOOD
NONE
IGI 739526005