



# INTERNATIONAL GEMOLOGICAL INSTITUTE

## DIAMOND REPORT

October 10, 2025

IGI Report Number

739508397

Description

NATURAL DIAMOND

Shape and Cutting Style

ROUND BRILLIANT

Measurements

4.79 - 4.83 X 3.01 MM

## GRADING RESULTS

Carat Weight

0.43 CARAT

Color Grade

G

Clarity Grade

INTERNALLY FLAWLESS

Cut Grade

EXCELLENT

## ADDITIONAL GRADING INFORMATION

Polish

EXCELLENT

Symmetry

EXCELLENT

Fluorescence

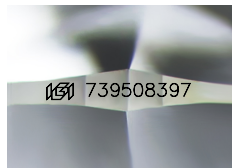
VERY SLIGHT

Inscription(s)

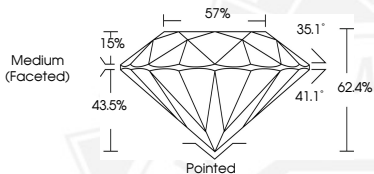
IGI 739508397

Comments: IDEAL CUT ROUND BRILLIANT

ELECTRONIC COPY



Sample Image Used



THIS DOCUMENT WAS PRODUCED WITH THE FOLLOWING SECURITY MEASURES: SPECIAL DOCUMENT PAPER, INK SCREENS, WATERMARK, BACKGROUND DESIGNS, HOLOGRAM AND OTHER SECURITY FEATURES NOT LISTED AND DO EXCEED DOCUMENT SECURITY INDUSTRY GUIDELINES.

For terms & conditions and to verify this report, please visit [www.igi.org](http://www.igi.org)



October 10, 2025

IGI Report Number 739508397

ROUND BRILLIANT

NATURAL DIAMOND

4.79 - 4.83 X 3.01 MM

Carat Weight 0.43 CARAT

Color Grade G

Clarity Grade I.F.

Cut Grade EXCELLENT

Polish EXCELLENT

Symmetry EXCELLENT

Fluorescence VERY SLIGHT

Inscription(s) IGI 739508397

Comments: IDEAL CUT ROUND

BRILLIANT



October 10, 2025

IGI Report Number 739508397

ROUND BRILLIANT

NATURAL DIAMOND

4.79 - 4.83 X 3.01 MM

Carat Weight 0.43 CARAT

Color Grade G

Clarity Grade I.F.

Cut Grade EXCELLENT

Polish EXCELLENT

Symmetry EXCELLENT

Fluorescence VERY SLIGHT

Inscription(s) IGI 739508397

Comments: IDEAL CUT ROUND

BRILLIANT