



ELECTRONIC COPY

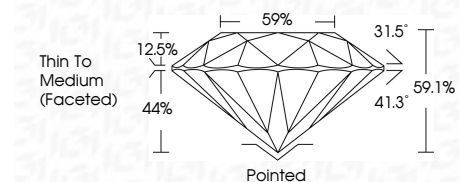
738515902
Report verification at igi.org



October 8, 2025
IGI Report Number **738515902**
Description **NATURAL DIAMOND**
Shape and Cutting Style **ROUND BRILLIANT**
Measurements **10.19 - 10.26 X 6.04 MM**

GRADING RESULTS

Carat Weight **3.75 CARATS**
Color Grade **J**
Clarity Grade **VVS 2**
Cut Grade **EXCELLENT**



ADDITIONAL GRADING INFORMATION

Polish **EXCELLENT**
Symmetry **EXCELLENT**
Fluorescence **NONE**
Inscription(s) **IGI 738515902**



IGI

October 8, 2025
IGI Report No 738515902
ROUND BRILLIANT
10.19 - 10.26 X 6.04 MM
3.75 CARATS
J
VVS 2
EXCELLENT
59.1%
59%
Thin To Medium (Faceted)
Pointed
EXCELLENT
EXCELLENT
NONE
IGI 738515902

DIAMOND REPORT

October 8, 2025
IGI Report Number **738515902**
Description **NATURAL DIAMOND**
Shape and Cutting Style **ROUND BRILLIANT**
Measurements **10.19 - 10.26 X 6.04 MM**

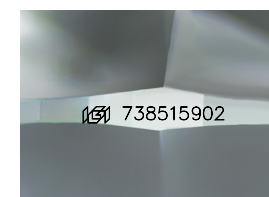
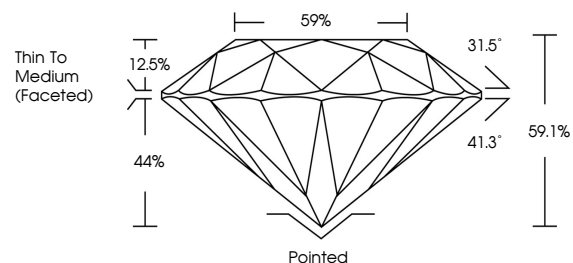
GRADING RESULTS

Carat Weight **3.75 CARATS**
Color Grade **J**
Clarity Grade **VVS 2**
Cut Grade **EXCELLENT**

ADDITIONAL GRADING INFORMATION

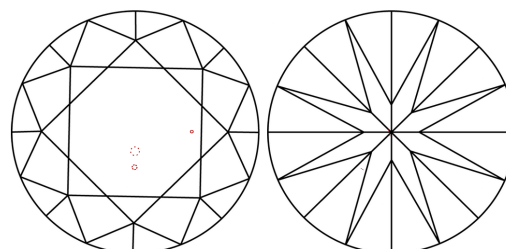
Polish **EXCELLENT**
Symmetry **EXCELLENT**
Fluorescence **NONE**
Inscription(s) **IGI 738515902**

PROPORTIONS



Sample Image Used

CLARITY CHARACTERISTICS



KEY TO SYMBOLS

Red symbols indicate internal characteristics.
Green symbols indicate external characteristics.

COLOR

D - F	G - J	K - M	N - R	S - Z	FANCY
Colorless	Near Colorless	Slightly Tinted	Very Light Color	Light Color	

CLARITY

IF	VVS 1-2	VS 1-2	SI 1-2	I 1-3
Internally Flawless	Very Very Slightly Included	Very Slightly Included	Slightly Included	Included

