



ELECTRONIC COPY

DIAMOND REPORT

December 16, 2025	
IGI Report Number	738501921
Description	NATURAL DIAMOND
Shape and Cutting Style	ROUND BRILLIANT
Measurements	9.40 - 9.46 X 5.77 MM

GRADING RESULTS

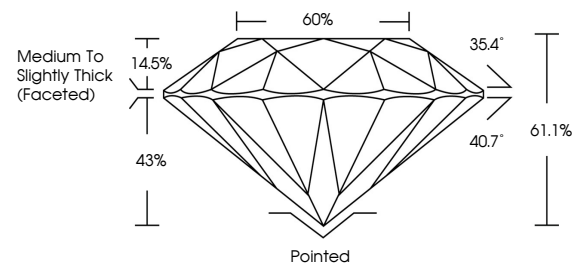
Carat Weight	3.20 CARATS
Color Grade	J
Clarity Grade	VVS 1
Cut Grade	EXCELLENT

ADDITIONAL GRADING INFORMATION

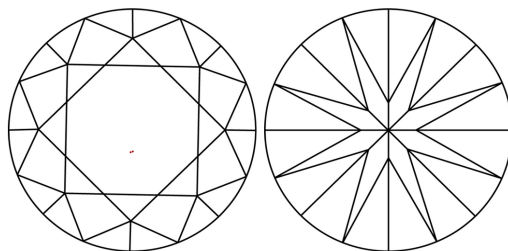
Polish	EXCELLENT
Symmetry	EXCELLENT
Fluorescence	NONE
Inscription(s)	 738501921
Comments: IDEAL CUT ROUND BRILLIANT	

738501921
Report verification at igi.org

PROPORTIONS

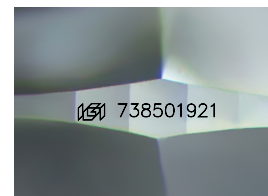


CLARITY CHARACTERISTICS



KEY TO SYMBOLS

Red symbols indicate internal characteristics.
Green symbols indicate external characteristics.



Sample Image Used

COLOR

D - F	G - J	K - M	N - R	S - Z	FANCY
Colorless	Near Colorless	Slightly Tinted	Very Light Color	Light Color	

CLARITY

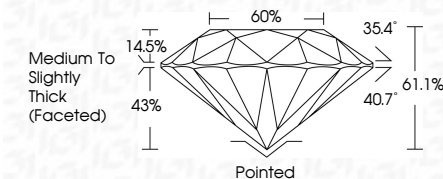
FL	IF	VVS ¹⁻²	VS ¹⁻²	SI ¹⁻²	I ¹⁻³
Flawless	Internally Flawless	Very Very Slightly Included	Very Slightly Included	Slightly Included	Included



December 16, 2025	
IGI Report Number	738501921
Description	NATURAL DIAMOND
Shape and Cutting Style	ROUND BRILLIANT
Measurements	9.40 - 9.46 X 5.77 MM

GRADING RESULTS

Carat Weight	3.20 CARATS
Color Grade	J
Clarity Grade	VVS 1
Cut Grade	EXCELLENT



ADDITIONAL GRADING INFORMATION

Polish	EXCELLENT
Symmetry	EXCELLENT
Fluorescence	NONE
Inscription(s)	 738501921
Comments: IDEAL CUT ROUND BRILLIANT	



© IGI 2020, International Gemological Institute

FD - 10 20



THIS DOCUMENT WAS PRODUCED WITH THE FOLLOWING SECURITY MEASURES: SPECIAL DOCUMENT PAPER, INK SCREENS, WATERMARK, BACKGROUND DESIGNS, HOLOGRAM, AND OTHER SECURITY FEATURES NOT LISTED AND DO EXCEED DOCUMENT SECURITY INDUSTRY GUIDELINES.

December 16, 2025		<p>Me TI</p>
(G) Report No 738501921		
ROUND BRILLIANT		
9.40 - 9.46 X 5.77 MM		
Carat Weight		
Color Grade		
Clarity Grade		
Cut Grade		
Depth		
Table		
Girdle	<p>Comments: IDEAL CUT ROUND BRILLIANT</p>	
Culet		
Polish		
Symmetry		
Fluorescence		
Inscription(s)		