



ELECTRONIC COPY

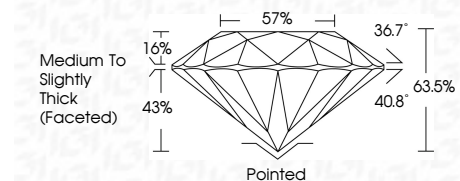
737595416
Report verification at igi.org



December 16, 2025
IGI Report Number **737595416**
Description **NATURAL DIAMOND**
Shape and Cutting Style **ROUND BRILLIANT**
Measurements **7.03 - 7.06 X 4.48 MM**

GRADING RESULTS

Carat Weight **1.40 CARAT**
Color Grade **J**
Clarity Grade **VVS 1**
Cut Grade **EXCELLENT**



ADDITIONAL GRADING INFORMATION

Polish **EXCELLENT**
Symmetry **EXCELLENT**
Fluorescence **NONE**
Inscription(s) **IGI 737595416**



IGI

December 16, 2025
IGI Report No 737595416
ROUND BRILLIANT
1.40 CARAT **J**
Color Grade **EXCELLENT**
Clarity Grade **VVS 1**
Depth **63.5%**
Table **57%**
Girdle **Medium To Slightly Thick (Faceted)**
Culet **Pointed**
Polish **EXCELLENT**
Symmetry **EXCELLENT**
Fluorescence **NONE**
Inscriptions(s) **IGI 737595416**

DIAMOND REPORT

December 16, 2025
IGI Report Number **737595416**
Description **NATURAL DIAMOND**
Shape and Cutting Style **ROUND BRILLIANT**
Measurements **7.03 - 7.06 X 4.48 MM**

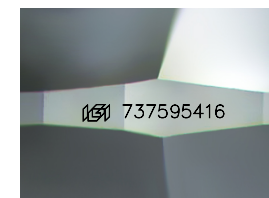
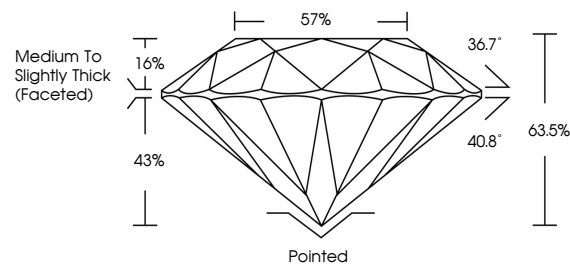
GRADING RESULTS

Carat Weight **1.40 CARAT**
Color Grade **J**
Clarity Grade **VVS 1**
Cut Grade **EXCELLENT**

ADDITIONAL GRADING INFORMATION

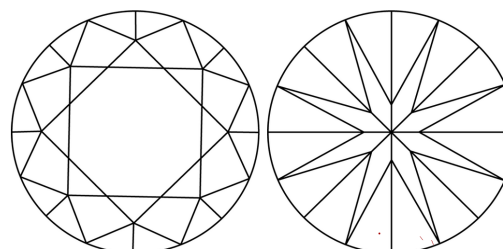
Polish **EXCELLENT**
Symmetry **EXCELLENT**
Fluorescence **NONE**
Inscription(s) **IGI 737595416**

PROPORTIONS



Sample Image Used

CLARITY CHARACTERISTICS



KEY TO SYMBOLS

Red symbols indicate internal characteristics.
Green symbols indicate external characteristics.

COLOR

| D - F | G - J | K - M | N - R | S - Z | FANCY |
|-----------|----------------|-----------------|------------------|-------------|-------|
| Colorless | Near Colorless | Slightly Tinted | Very Light Color | Light Color | |

CLARITY

| FL | IF | VVS 1-2 | VS 1-2 | SI 1-2 | I 1-3 |
|----------|---------------------|-----------------------------|------------------------|-------------------|----------|
| Flawless | Internally Flawless | Very Very Slightly Included | Very Slightly Included | Slightly Included | Included |

