



**ELECTRONIC COPY**

## DIAMOND REPORT

October 29, 2025	
IGI Report Number	737595143
Description	NATURAL DIAMOND
Shape and Cutting Style	PRINCESS CUT
Measurements	6.94 X 6.90 X 4.96 MM

## GRADING RESULTS

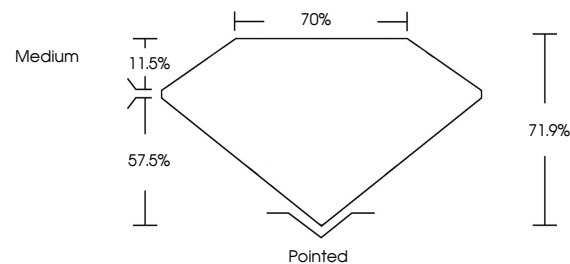
Carat Weight	2.07 CARATS
Color Grade	H
Clarity Grade	SI 2
Cut Grade	EXCELLENT

### ADDITIONAL GRADING INFORMATION

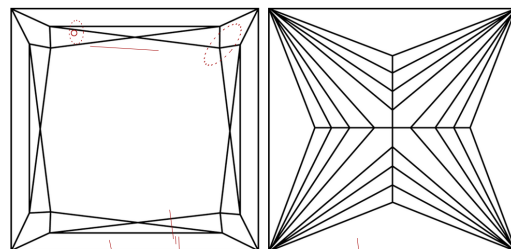
Polish	EXCELLENT
Symmetry	EXCELLENT
Fluorescence	NONE
Inscription(s)	 737595143

737595143  
Report verification at [igi.org](http://igi.org)

## PROPORTIONS

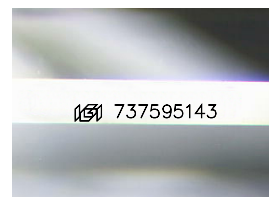


## CLARITY CHARACTERISTICS



## KEY TO SYMBOLS

Red symbols indicate internal characteristics.  
Green symbols indicate external characteristics.



Sample Image Used

**COLOR**

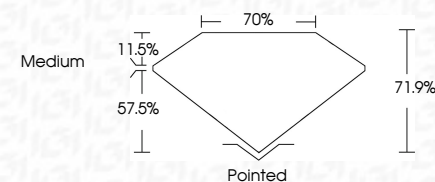
D - F	G - J	K - M	N - R	S - Z	FANCY
Colorless	Near Colorless	Slightly Tinted	Very Light Color	Light Color	

## CLARITY

IF	VVS <sup>1-2</sup>	VS <sup>1-2</sup>	SI <sup>1-2</sup>	I <sup>1-3</sup>
Internally Flawless	Very Very Slightly Included	Very Slightly Included	Slightly Included	Included



October 29, 2025	
IGI Report Number	737595143
Description	NATURAL DIAMOND
Shape and Cutting Style	PRINCESS CUT
Measurements	6.94 X 6.90 X 4.96 MM
GRADING RESULTS	
Carat Weight	2.07 CARATS
Color Grade	H
Clarity Grade	SI 2
Cut Grade	EXCELLENT



### ADDITIONAL GRADING INFORMATION

Polish	EXCELLENT
Symmetry	EXCELLENT
Fluorescence	NONE
Inscription(s)	(15) 737595143



© IGI 2020, International Gemological Institute

FD - 10 20

**www.igi.org**



THIS DOCUMENT WAS PRODUCED WITH THE FOLLOWING SECURITY MEASURES: SPECIAL DOCUMENT PAPER, INK SCREENS, WATERMARK, BACKGROUND DESIGNS, HOLOGRAM AND OTHER SECURITY FEATURES NOT LISTED AND DO EXCEED DOCUMENT SECURITY INDUSTRY GUIDELINES

October 29, 2025  
IGI Report No 737595143  
PRINCESS CIT

5.94 X 6.90 X 4.96 MM	2.07 CARATS
Carat Weight	H
Color Grade	S12
Clarity Grade	EXCELLENT
Cut Grade	71.9%
Depth	70%
Table	Medium
Girdle	
Culet	Pointed
Polish	EXCELLENT
Symmetry	EXCELLENT
Fluorescence	NONE
International	Lab 7578503148