



**ELECTRONIC COPY**

## DIAMOND REPORT

|                         |                       |
|-------------------------|-----------------------|
| October 29, 2025        |                       |
| IGI Report Number       | 737595142             |
| Description             | NATURAL DIAMOND       |
| Shape and Cutting Style | ROUND BRILLIANT       |
| Measurements            | 8.03 - 8.07 X 4.98 MM |

## GRADING RESULTS

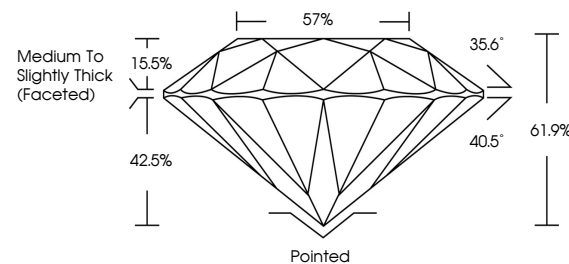
|               |             |
|---------------|-------------|
| Carat Weight  | 2.01 CARATS |
| Color Grade   | K           |
| Clarity Grade | VVS 2       |
| Cut Grade     | EXCELLENT   |

### ADDITIONAL GRADING INFORMATION

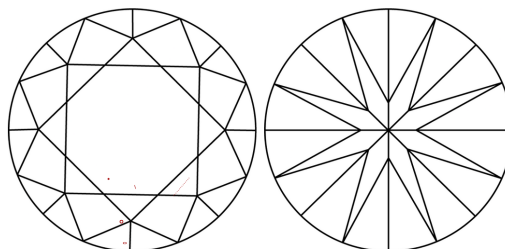
|                                     |   |
|-------------------------------------|---|
| Polish                              | EXCELLENT   |
| Symmetry                            | EXCELLENT   |
| Fluorescence                        | NONE  |
| Inscription(s)                      |  737595142 |
| Comments: IDEAL CUT ROUND BRILLIANT |   |

737595142  
Report verification at [igi.org](https://www.igi.org)

## PROPORTIONS

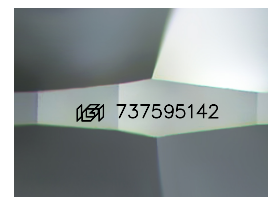


## CLARITY CHARACTERISTICS



## KEY TO SYMBOLS

Red symbols indicate internal characteristics.  
Green symbols indicate external characteristics.



Sample Image Used

**COLOR**

| D - F     | G - J          | K - M           | N - R            | S - Z       | FANCY |
|-----------|----------------|-----------------|------------------|-------------|-------|
| Colorless | Near Colorless | Slightly Tinted | Very Light Color | Light Color |       |

## CLARITY

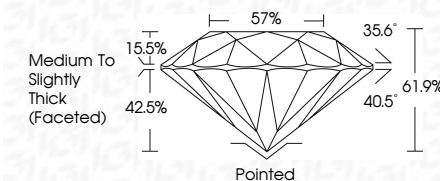
| IF                  | VVS <sup>1-2</sup>          | VS <sup>1-2</sup>      | SI <sup>1-2</sup> | I <sup>1-3</sup> |
|---------------------|-----------------------------|------------------------|-------------------|------------------|
| Internally Flawless | Very Very Slightly Included | Very Slightly Included | Slightly Included | Included         |



|                         |                       |
|-------------------------|-----------------------|
| October 29, 2025        |                       |
| IGI Report Number       | 737595142             |
| Description             | NATURAL DIAMOND       |
| Shape and Cutting Style | ROUND BRILLIANT       |
| Measurements            | 8.03 - 8.07 X 4.98 MM |

## GRADING RESULTS

|               |             |
|---------------|-------------|
| Carat Weight  | 2.01 CARATS |
| Color Grade   | K           |
| Clarity Grade | VVS 2       |
| Cut Grade     | EXCELLENT   |



### ADDITIONAL GRADING INFORMATION

|                                     |                          |
|-------------------------------------|--------------------------|
| Polish                              | EXCELLENT                |
| Symmetry                            | EXCELLENT                |
| Fluorescence                        | NONE                     |
| Inscription(s)                      | <del>(G)</del> 737595142 |
| Comments: IDEAL CUT ROUND BRILLIANT |                          |



IG



© IGI 2020, International Gemological Institute

FD - 10 20



THIS DOCUMENT WAS PRODUCED WITH THE FOLLOWING SECURITY MEASURES: SPECIAL DOCUMENT PAPER, INK SCREENS, WATERMARK, BACKGROUND DESIGNS, HOLOGRAM AND OTHER SECURITY FEATURES NOT LISTED AND DO EXCEED DOCUMENT SECURITY INDUSTRY GUIDELINES

|                           |     |
|---------------------------|-----|
| October 29, 2025          | Med |
| IGI Report No. 73795162   | th  |
| ROUND BRILLIANT           |     |
| Carat Weight              |     |
| Color Grade               |     |
| Clarity Grade             |     |
| Cut Grade                 |     |
| Depth                     |     |
| Table                     |     |
| Girdle                    |     |
| Culet                     |     |
| Polish                    |     |
| Symmetry                  |     |
| Fluorescence              |     |
| Inscriptions              |     |
| Comments:                 |     |
| IDEAL CUT ROUND BRILLIANT |     |