



ELECTRONIC COPY

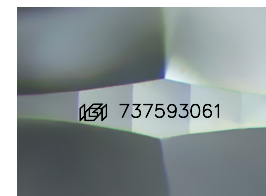
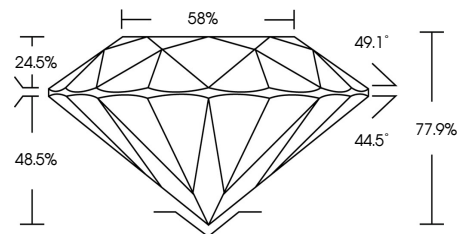
737593061
Report verification at igi.org



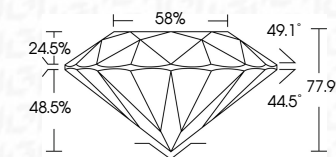
November 7, 2025
IGI Report Number **737593061**
Description **NATURAL DIAMOND**
Shape and Cutting Style **ROUND BRILLIANT**
Measurements **6.29 - 6.35 X 4.93 MM**
GRADING RESULTS
Carat Weight **1.29 CARAT**
Color Grade **BLACK, TREATED COLOR**

November 7, 2025
IGI Report Number **737593061**
Description **NATURAL DIAMOND**
Shape and Cutting Style **ROUND BRILLIANT**
Measurements **6.29 - 6.35 X 4.93 MM**
GRADING RESULTS
Carat Weight **1.29 CARAT**
Color Grade **BLACK, TREATED COLOR**
ADDITIONAL GRADING INFORMATION
Fluorescence **NONE**
Inscription(s) **737593061**

PROPORTIONS



Sample Image Used



COLOR

| D - F | G - J | K - M | N - R | S - Z | FANCY |
|-----------|----------------|-----------------|------------------|-------------|-------|
| Colorless | Near Colorless | Slightly Tinted | Very Light Color | Light Color | |

CLARITY

| IF | VVS ¹⁻² | VS ¹⁻² | SI ¹⁻² | I ¹⁻³ |
|---------------------|-----------------------------|------------------------|-------------------|------------------|
| Internally Flawless | Very Very Slightly Included | Very Slightly Included | Slightly Included | Included |

ADDITIONAL GRADING INFORMATION

Fluorescence **NONE**
Inscription(s) **737593061**



IGI



November 7, 2025
IGI Report No 737593061
ROUND BRILLIANT
Carat Weight **1.29 CARAT**
Color Grade **BLACK, TREATED COLOR**
Depth **77.9%**
Table **58%**
Culet **NONE**
Fluorescence **NONE**
Inscription(s) **737593061**