



**ELECTRONIC COPY**

## DIAMOND REPORT

|                         |                       |
|-------------------------|-----------------------|
| December 11, 2025       |                       |
| IGI Report Number       | 737564525             |
| Description             | NATURAL DIAMOND       |
| Shape and Cutting Style | ROUND BRILLIANT       |
| Measurements            | 8.02 - 8.09 X 4.93 MM |

## GRADING RESULTS

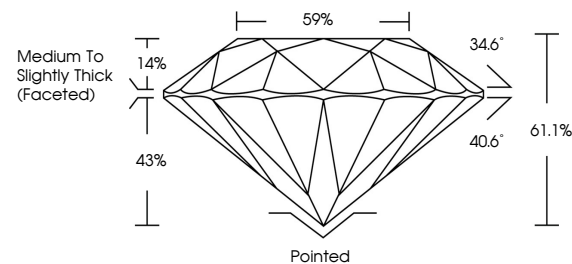
|               |             |
|---------------|-------------|
| Carat Weight  | 2.01 CARATS |
| Color Grade   | I           |
| Clarity Grade | SI 1        |
| Cut Grade     | EXCELLENT   |

### ADDITIONAL GRADING INFORMATION

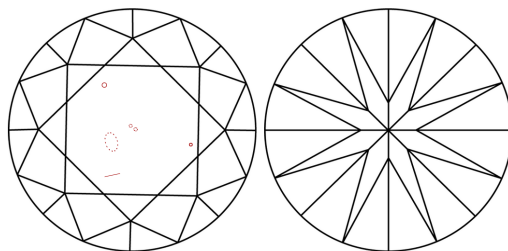
|                |               |
|----------------|---------------|
| Polish         | EXCELLENT     |
| Symmetry       | EXCELLENT     |
| Fluorescence   | NONE          |
| Inscription(s) | 131 737564525 |

737564525  
Report verification at [igi.org](http://igi.org)

## PROPORTIONS

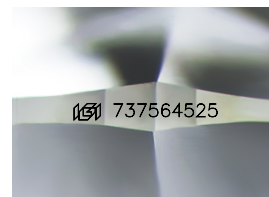


## CLARITY CHARACTERISTICS



## KEY TO SYMBOLS

Red symbols indicate internal characteristics.  
Green symbols indicate external characteristics.



Sample Image Used

**COLOR**

| D - F     | G - J          | K - M           | N - R            | S - Z       | FANCY |
|-----------|----------------|-----------------|------------------|-------------|-------|
| Colorless | Near Colorless | Slightly Tinted | Very Light Color | Light Color |       |

## CLARITY

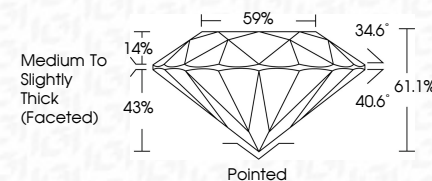
| FL       | IF                  | VVS <sup>1-2</sup>          | VS <sup>1-2</sup>      | SI <sup>1-2</sup> | I <sup>1-3</sup> |
|----------|---------------------|-----------------------------|------------------------|-------------------|------------------|
| Flawless | Internally Flawless | Very Very Slightly Included | Very Slightly Included | Slightly Included | Included         |



|                         |                       |
|-------------------------|-----------------------|
| December 11, 2025       |                       |
| IGI Report Number       | 737564525             |
| Description             | NATURAL DIAMOND       |
| Shape and Cutting Style | ROUND BRILLIANT       |
| Measurements            | 8.02 - 8.09 X 4.93 MM |

## GRADING RESULTS

|               |             |
|---------------|-------------|
| Carat Weight  | 2.01 CARATS |
| Color Grade   | I           |
| Clarity Grade | SI 1        |
| Cut Grade     | EXCELLENT   |



### ADDITIONAL GRADING INFORMATION

|                |                |
|----------------|----------------|
| Polish         | EXCELLENT      |
| Symmetry       | EXCELLENT      |
| Fluorescence   | NONE           |
| Inscription(s) | (13) 737564525 |



IG



© IGI 2020, International Gemological Institute

FD - 10 20



THIS DOCUMENT WAS PRODUCED WITH THE FOLLOWING SECURITY MEASURES: SPECIAL DOCUMENT PAPER, INK SCREENS, WATERMARK, BACKGROUND DESIGNS, HOLOGRAM AND OTHER SECURITY FEATURES NOT LISTED AND DO EXCEED DOCUMENT SECURITY INDUSTRY GUIDELINES

December 11, 2025  
IGI Report No 737564525  
ROUND BRILLIANT

|                       |                   |                                    |
|-----------------------|-------------------|------------------------------------|
| 8.02 - 8.09 X 4.93 MM |                   | 2.01 CARATS                        |
| Color                 | Color Grade       | I                                  |
| Carat Weight          | Clarity Grade     | S I 1                              |
|                       | Cut Grade         | EXCELLENT                          |
| Depth                 |                   | 61.1%                              |
| Table                 |                   | 59%                                |
| Girdle                |                   | Medium To Slightly Thick (Faceted) |
| Fluorescence          | Fluorescence      | Pointed                            |
| Symmetry              | Symmetry          | EXCELLENT                          |
| Polish                | Polish            | EXCELLENT                          |
| Measurements (mm)     | Measurements (mm) | NONE                               |
|                       |                   | Ref: 7575744695                    |