



ELECTRONIC COPY

DIAMOND REPORT

December 3, 2025	
IGI Report Number	737564512
Description	NATURAL DIAMOND
Shape and Cutting Style	ROUND BRILLIANT
Measurements	6.33 - 6.36 X 3.96 MM

GRADING RESULTS

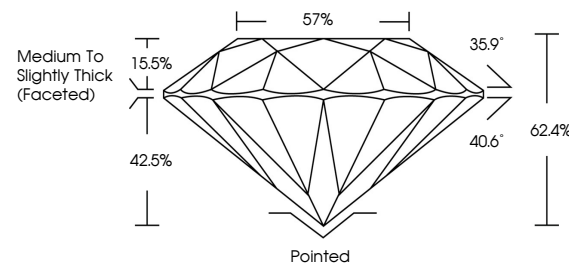
Carat Weight	1.00 CARAT
Color Grade	H
Clarity Grade	SI 2
Cut Grade	EXCELLENT

ADDITIONAL GRADING INFORMATION

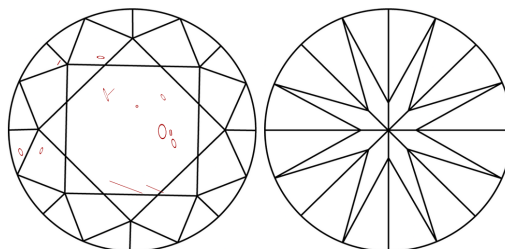
Polish	EXCELLENT
Symmetry	EXCELLENT
Fluorescence	NONE
Inscription(s)	 737564512
Comments: IDEAL CUT ROUND BRILLIANT	

737564512
Report verification at igi.org

PROPORTIONS

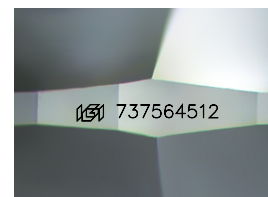


CLARITY CHARACTERISTICS



KEY TO SYMBOLS

Red symbols indicate internal characteristics.
Green symbols indicate external characteristics.



Sample Image Used

COLOR

D - F	G - J	K - M	N - R	S - Z	FANCY
Colorless	Near Colorless	Slightly Tinted	Very Light Color	Light Color	

CLARITY

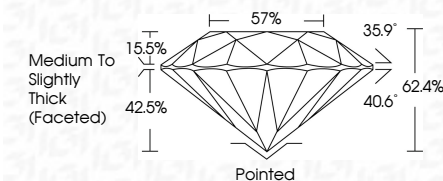
FL	IF	VVS ¹⁻²	VS ¹⁻²	SI ¹⁻²	I ¹⁻³
Flawless	Internally Flawless	Very Very Slightly Included	Very Slightly Included	Slightly Included	Included



December 3, 2025	
IGI Report Number	737564512
Description	NATURAL DIAMOND
Shape and Cutting Style	ROUND BRILLIANT
Measurements	6.33 - 6.36 X 3.96 MM

GRADING RESULTS

Carat Weight	1.00 CARAT
Color Grade	H
Clarity Grade	SI 2
Cut Grade	EXCELLENT



ADDITIONAL GRADING INFORMATION

Polish	EXCELLENT
Symmetry	EXCELLENT
Fluorescence	NONE
Inscription(s)	(G) 737564512
Comments: IDEAL CUT ROUND BRILLIANT	



IG



© IGI 2020, International Gemological Institute

FD - 10 20



THIS DOCUMENT WAS PRODUCED WITH THE FOLLOWING SECURITY MEASURES: SPECIAL DOCUMENT PAPER, INK SCREENS, WATERMARK, BACKGROUND DESIGNS, HOLOGRAM AND OTHER SECURITY FEATURES NOT LISTED AND DO EXCEED DOCUMENT SECURITY INDUSTRY GUIDELINES

December 3, 2025
IGI Report No 737564
ROUND BRILLIANT

Color Grade	S12	1.00 CARAT
Clarity Grade	EXCELLENT	H
Cut Grade	62.4%	
Depth	57%	
Table	Medium to Slightly Thick (faceted)	
Girdle		
Culet	Pointed	
Polish	EXCELLENT	
Symmetry	EXCELLENT	
Fluorescence	NONE	
Measurements (mm)	see 7575754612	

Comments:
IDEAL CUT ROUND BRILLIANT

www.igi.org