



ELECTRONIC COPY

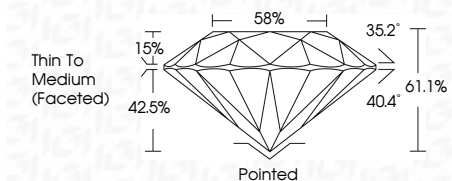
737552338
Report verification at igi.org



October 1, 2025
IGI Report Number **737552338**
Description **NATURAL DIAMOND**
Shape and Cutting Style **ROUND BRILLIANT**
Measurements **10.17 - 10.24 X 6.23 MM**

GRADING RESULTS

Carat Weight **4.01 CARATS**
Color Grade **I**
Clarity Grade **SI 2**
Cut Grade **EXCELLENT**



ADDITIONAL GRADING INFORMATION

Polish **EXCELLENT**
Symmetry **EXCELLENT**
Fluorescence **STRONG**
Inscription(s) **IGI 737552338**
Comments: IDEAL CUT ROUND BRILLIANT

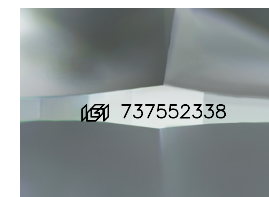
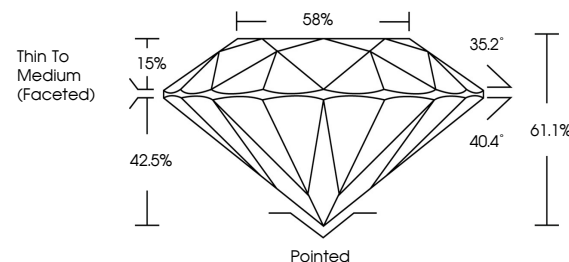


IGI



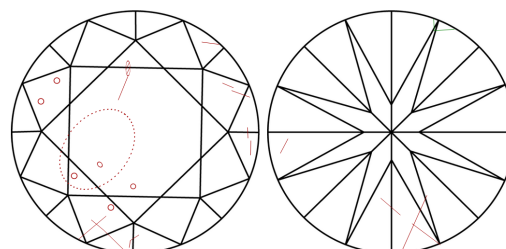
October 1, 2025
IGI Report No 737552338
ROUND BRILLIANT
10.17 - 10.24 X 6.23 MM
Carat Weight **4.01 CARATS**
Color Grade **I**
Clarity Grade **SI 2**
Depth **EXCELLENT**
Table **61.1%**
Girdle **EXCELLENT**
Culet **88%**
Thin To Medium (Faceted) **Pointed**
Polish **EXCELLENT**
Symmetry **EXCELLENT**
Fluorescence **STRONG**
Inscription(s) **IGI 737552338**
Comments: **IDEAL CUT ROUND BRILLIANT**

PROPORTIONS



Sample Image Used

CLARITY CHARACTERISTICS



KEY TO SYMBOLS

Red symbols indicate internal characteristics.
Green symbols indicate external characteristics.

COLOR

D - F	G - J	K - M	N - R	S - Z	FANCY
Colorless	Near Colorless	Slightly Tinted	Very Light Color	Light Color	

CLARITY

IF	VVS ¹⁻²	VS ¹⁻²	SI ¹⁻²	I ¹⁻³
Internally Flawless	Very Very Slightly Included	Very Slightly Included	Slightly Included	Included

October 1, 2025
IGI Report Number **737552338**
Description **NATURAL DIAMOND**
Shape and Cutting Style **ROUND BRILLIANT**
Measurements **10.17 - 10.24 X 6.23 MM**

GRADING RESULTS

Carat Weight **4.01 CARATS**
Color Grade **I**
Clarity Grade **SI 2**
Cut Grade **EXCELLENT**

ADDITIONAL GRADING INFORMATION

Polish **EXCELLENT**
Symmetry **EXCELLENT**
Fluorescence **STRONG**
Inscription(s) **IGI 737552338**
Comments: IDEAL CUT ROUND BRILLIANT