



ELECTRONIC COPY

DIAMOND REPORT

October 9, 2025	
IGI Report Number	7375444561
Description	NATURAL DIAMOND
Shape and Cutting Style	SQUARE EMERALD CUT
Measurements	5.44 X 5.33 X 3.66 MM

GRADING RESULTS

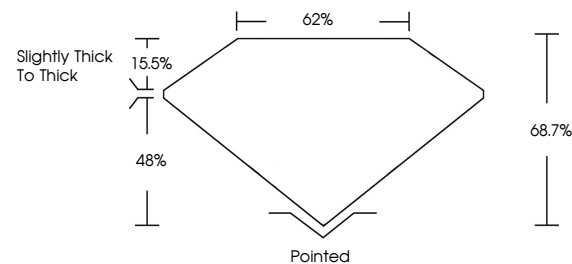
Carat Weight	1.01 CARAT
Color Grade	I
Clarity Grade	VVS 2
Cut Grade	VERY GOOD

ADDITIONAL GRADING INFORMATION

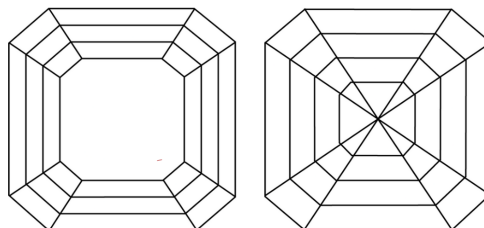
Polish	EXCELLENT
Symmetry	EXCELLENT
Fluorescence	NONE
Inscription(s)	131 737544456

737544456
Report verification at igi.org

PROPORTIONS

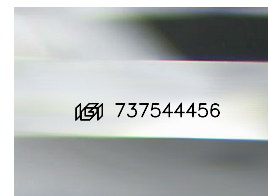


CLARITY CHARACTERISTICS



KEY TO SYMBOLS

Red symbols indicate internal characteristics.
Green symbols indicate external characteristics.



Sample Image Used

COLOR

D - F	G - J	K - M	N - R	S - Z	FANCY
Colorless	Near Colorless	Slightly Tinted	Very Light Color	Light Color	

CLARITY

IF	VVS ¹⁻²	VS ¹⁻²	SI ¹⁻²	I ¹⁻³
Internally Flawless	Very Very Slightly Included	Very Slightly Included	Slightly Included	Included

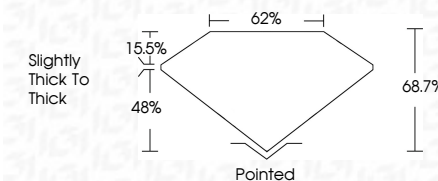
DIAMOND REPORT



October 9, 2025	
IGI Report Number	737544456
Description	NATURAL DIAMOND
Shape and Cutting Style	SQUARE EMERALD CUT
Measurements	5.44 X 5.33 X 3.66 MM

GRADING RESULTS

Carat Weight	1.01 CARAT
Color Grade	I
Clarity Grade	VVS 2
Cut Grade	VERY GOOD



ADDITIONAL GRADING INFORMATION

Polish	EXCELLENT
Symmetry	EXCELLENT
Fluorescence	NONE
Inscription(s)	163 737544456



© IGI 2020, International Gemological Institute

FD - 10 20



THIS DOCUMENT WAS PRODUCED WITH THE FOLLOWING SECURITY MEASURES: SPECIAL DOCUMENT PAPER, INK SCREENS, WATERMARK, BACKGROUND DESIGNS, HOLOGRAM AND OTHER SECURITY FEATURES NOT LISTED AND DO EXCEED DOCUMENT SECURITY INDUSTRY GUIDELINES

October 9, 2025
 EGI Report No 7375
 SQUARE EMERALD

4.41 X 5.93 X 5.65 MM	1.01 CARAT	VVS 2	Pointed
Carat Weight		VERY GOOD	EXCELLENT
Color Grade		68.7%	EXCELLENT
Clarity Grade		62%	NONE
Cut Grade		Slightly Thick to Thick	
Depth			Culet
Table			Polish
Grade			Symmetry
			Fluorescence