



**ELECTRONIC COPY**

## DIAMOND REPORT

October 6, 2025	
IGI Report Number	737544211
Description	NATURAL DIAMOND
Shape and Cutting Style	PRINCESS CUT
Measurements	9.66 X 9.22 X 6.89 MM

## GRADING RESULTS

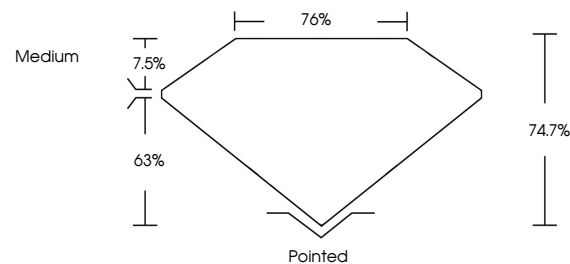
Carat Weight	5.05 CARATS
Color Grade	I
Clarity Grade	VVS 2
Cut Grade	VERY GOOD

### ADDITIONAL GRADING INFORMATION

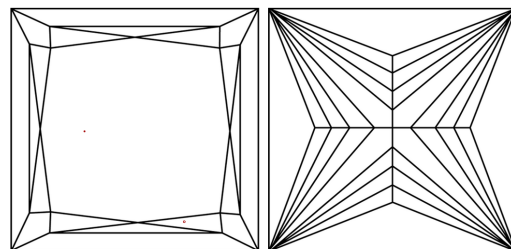
Polish	EXCELLENT
Symmetry	EXCELLENT
Fluorescence	NONE
Inscription(s)	<del>131</del> 737544211

737544211  
Report verification at [igi.org](http://igi.org)

## PROPORTIONS

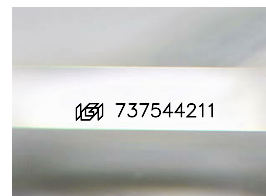


## CLARITY CHARACTERISTICS



### KEY TO SYMBOLS

Red symbols indicate internal characteristics.  
Green symbols indicate external characteristics.



Sample Image Used

**COLOR**

D - F	G - J	K - M	N - R	S - Z	FANCY
Colorless	Near Colorless	Slightly Tinted	Very Light Color	Light Color	

## CLARITY

IF	VVS <sup>1-2</sup>	VS <sup>1-2</sup>	SI <sup>1-2</sup>	I <sup>1-3</sup>
Internally Flawless	Very Very Slightly Included	Very Slightly Included	Slightly Included	Included

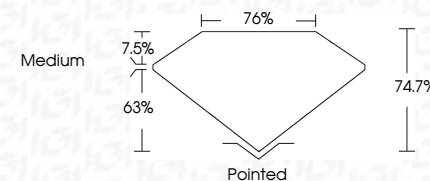
## DIAMOND REPORT



October 6, 2025	
IGI Report Number	737544211
Description	NATURAL DIAMOND
Shape and Cutting Style	PRINCESS CUT
Measurements	9.66 X 9.22 X 6.89 MM

## GRADING RESULTS

Carat Weight	5.05 CARATS
Color Grade	I
Clarity Grade	VVS 2
Cut Grade	VERY GOOD



### ADDITIONAL GRADING INFORMATION

Polish	EXCELLENT
Symmetry	EXCELLENT
Fluorescence	NONE
Inscription(s)	<del>165</del> 737544211



© IGI 2020, International Gemological Institute

FD - 10 20



THIS DOCUMENT WAS PRODUCED WITH THE FOLLOWING SECURITY MEASURES: SPECIAL DOCUMENT PAPER, INK SCREENS, WATERMARK, BACKGROUND DESIGNS, HOLOGRAM AND OTHER SECURITY FEATURES NOT LISTED AND DO EXCEED DOCUMENT SECURITY INDUSTRY GUIDELINES

**www.igi.org**

October 6, 2025  
 CGI Report No 737544211  
 PRINCESS CIT

6.5 X 9.22 X 0.89 MM	Carat Weight	5.05 CARATS
	Color Grade	I
	Clarity Grade	VVS 2
	Cut Grade	VERY GOOD
	Depth	74.7%
	Table	76%
	Girdle	Medium
	Culet	Pointed
	Polish	EXCELLENT
	Symmetry	EXCELLENT
	Fluorescence	NONE
	Report#	456 7875744011