



ELECTRONIC COPY

737543935
Report verification at igi.org



October 8, 2025
IGI Report Number **737543935**
Description **NATURAL DIAMOND**
Shape and Cutting Style **EMERALD CUT**
Measurements **8.10 X 5.68 X 3.88 MM**
GRADING RESULTS
Carat Weight **1.80 CARAT**
Color Grade **K**
Clarity Grade **VVS 2**
Cut Grade **VERY GOOD**

DIAMOND REPORT

October 8, 2025
IGI Report Number **737543935**
Description **NATURAL DIAMOND**
Shape and Cutting Style **EMERALD CUT**
Measurements **8.10 X 5.68 X 3.88 MM**

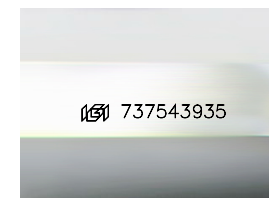
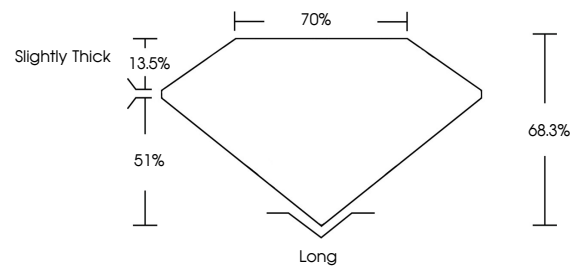
GRADING RESULTS

Carat Weight **1.80 CARAT**
Color Grade **K**
Clarity Grade **VVS 2**
Cut Grade **VERY GOOD**

ADDITIONAL GRADING INFORMATION

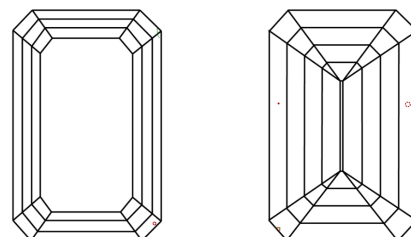
Polish **EXCELLENT**
Symmetry **EXCELLENT**
Fluorescence **NONE**
Inscription(s) **737543935**

PROPORTIONS



Sample Image Used

CLARITY CHARACTERISTICS



KEY TO SYMBOLS

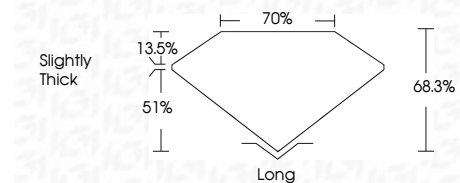
Red symbols indicate internal characteristics.
Green symbols indicate external characteristics.

COLOR

D - F	G - J	K - M	N - R	S - Z	FANCY
Colorless	Near Colorless	Slightly Tinted	Very Light Color	Light Color	

CLARITY

IF	VVS ¹⁻²	VS ¹⁻²	SI ¹⁻²	I ¹⁻³
Internally Flawless	Very Very Slightly Included	Very Slightly Included	Slightly Included	Included



ADDITIONAL GRADING INFORMATION

Polish **EXCELLENT**
Symmetry **EXCELLENT**
Fluorescence **NONE**
Inscription(s) **737543935**



IGI



October 8, 2025
IGI Report No 737543935
EMERALD CUT
8.10 X 5.68 X 3.88 MM
Carat Weight **1.80 CARAT**
Color Grade **K**
Clarity Grade **VVS 2**
Cut Grade **VERY GOOD**
Depth **68.3%**
Table **70%**
Girdle **Slightly Thick**
Culet **Long**
Polish **EXCELLENT**
Symmetry **EXCELLENT**
Fluorescence **NONE**
Inscription(s) **737543935**