

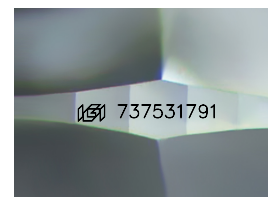
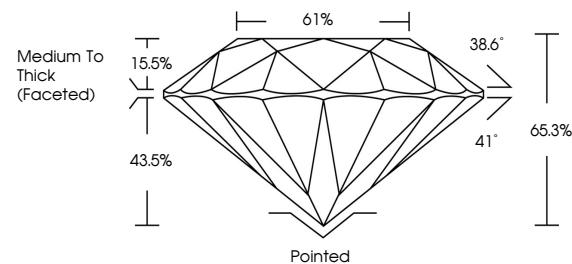


**ELECTRONIC COPY**

## DIAMOND REPORT

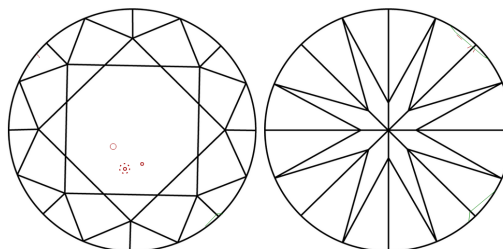
737531791  
Report verification at [igi.org](http://igi.org)

## PROPORTIONS



Sample Image Used

## CLARITY CHARACTERISTICS



## KEY TO SYMBOLS

Red symbols indicate internal characteristics.  
Green symbols indicate external characteristics.

**COLOR**

D - F	G - J	K - M	N - R	S - Z	FANCY
Colorless	Near Colorless	Slightly Tinted	Very Light Color	Light Color	

## CLARITY

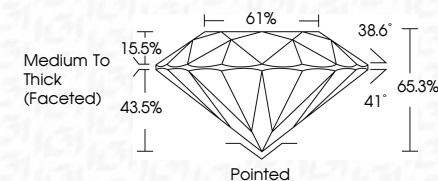
FL	IF	VVS <sup>1-2</sup>	VS <sup>1-2</sup>	SI <sup>1-2</sup>	I <sup>1-3</sup>
Flawless	Internally Flawless	Very Very Slightly Included	Very Slightly Included	Slightly Included	Included



January 16, 2026	
IGI Report Number	737531791
Description	NATURAL DIAMOND
Shape and Cutting Style	ROUND BRILLIANT
Measurements	7.63 - 7.81 X 5.07 MM

## GRADING RESULTS

Carat Weight	2.01 CARATS
Color Grade	H
Clarity Grade	VS 2
Cut Grade	VERY GOOD



### ADDITIONAL GRADING INFORMATION

Polish	EXCELLENT
Symmetry	VERY GOOD
Fluorescence	NONE
Inscription(s)	(15) 737531791



© IGI 2020, International Gemological Institute

FD - 10 20



THIS DOCUMENT WAS PRODUCED WITH THE FOLLOWING SECURITY MEASURES: SPECIAL DOCUMENT PAPER, INK SCREENS, WATERMARK, BACKGROUND DESIGNS, HOLOGRAM AND OTHER SECURITY FEATURES NOT LISTED AND DO EXCEED DOCUMENT SECURITY INDUSTRY GUIDELINES

**www.igi.org**

January 16, 2026  
IGI Report No 737531791  
ROUND BRILLIANT

7.68 - 7.81 X 5.07 MM	201 CARATS
Carat Weight	
Color Grade	H
Clarity Grade	VS 2
Cut Grade	VERY GOOD
Depth	66.3%
Table	61%
Grade	Medium to Thick (Faceted)
Culet	Pointed
Polish	EXCELLENT
Symmetry	VERY GOOD
Fluorescence	NONE
Inscriptions(s)	see 2793531701