



**ELECTRONIC COPY**

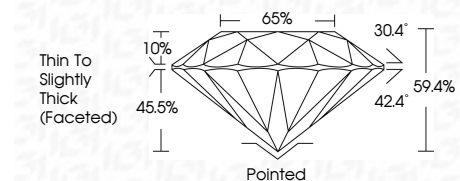
737531680  
Report verification at igi.org



January 2, 2026  
IGI Report Number **737531680**  
Description **NATURAL DIAMOND**  
Shape and Cutting Style **ROUND BRILLIANT**  
Measurements **8.18 - 8.28 X 4.89 MM**

**GRADING RESULTS**

Carat Weight **2.00 CARATS**  
Color Grade **I**  
Clarity Grade **VS 1**  
Cut Grade **VERY GOOD**



**ADDITIONAL GRADING INFORMATION**

Polish **VERY GOOD**  
Symmetry **GOOD**  
Fluorescence **VERY SLIGHT**  
Inscription(s) **IGI 737531680**



**IGI**

January 2, 2026  
IGI Report No 737531680  
**ROUND BRILLIANT**  
8.18 - 8.28 X 4.89 MM  
2.00 CARATS  
I  
Color Grade **VERY GOOD**  
VS 1  
Depth 59.4%  
Table 65%  
Girdle Thin To Slightly Thick (Faceted)  
Culet Pointed  
Polish **VERY GOOD**  
Symmetry **GOOD**  
Fluorescence **VERY SLIGHT**  
Inscription(s) IGI 737531680

**DIAMOND REPORT**

January 2, 2026  
IGI Report Number **737531680**  
Description **NATURAL DIAMOND**  
Shape and Cutting Style **ROUND BRILLIANT**  
Measurements **8.18 - 8.28 X 4.89 MM**

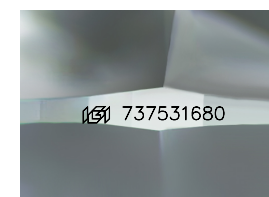
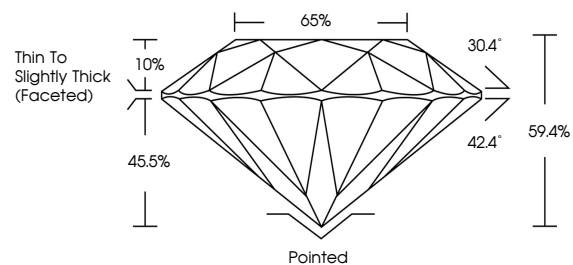
**GRADING RESULTS**

Carat Weight **2.00 CARATS**  
Color Grade **I**  
Clarity Grade **VS 1**  
Cut Grade **VERY GOOD**

**ADDITIONAL GRADING INFORMATION**

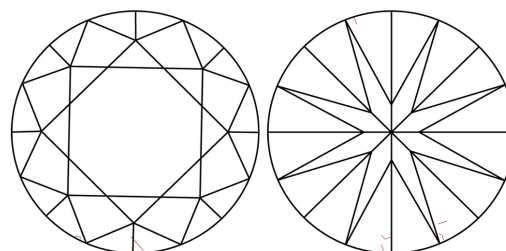
Polish **VERY GOOD**  
Symmetry **GOOD**  
Fluorescence **VERY SLIGHT**  
Inscription(s) **IGI 737531680**

**PROPORTIONS**



Sample Image Used

**CLARITY CHARACTERISTICS**



**KEY TO SYMBOLS**

Red symbols indicate internal characteristics.  
Green symbols indicate external characteristics.

**COLOR**

D - F	G - J	K - M	N - R	S - Z	FANCY
Colorless	Near Colorless	Slightly Tinted	Very Light Color	Light Color	

**CLARITY**

FL	IF	VVS 1-2	VS 1-2	SI 1-2	I 1-3
Flawless	Internally Flawless	Very Very Slightly Included	Very Slightly Included	Slightly Included	Included

