

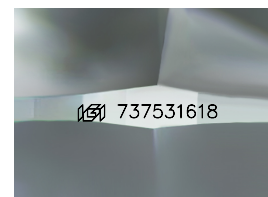
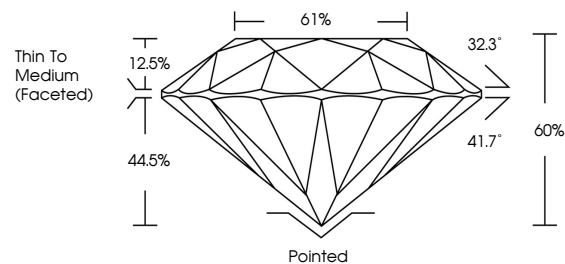


**ELECTRONIC COPY**

## DIAMOND REPORT

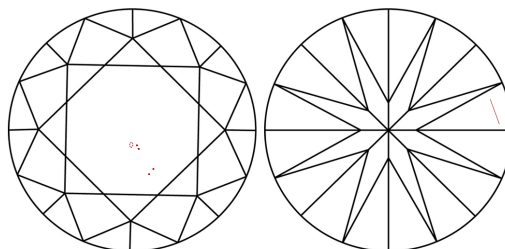
737531618  
Report verification at [igi.org](http://igi.org)

## PROPORTIONS



Sample Image Used

## CLARITY CHARACTERISTICS



### KEY TO SYMBOLS

Red symbols indicate internal characteristics.  
Green symbols indicate external characteristics.

**COLOR**

D - F	G - J	K - M	N - R	S - Z	FANCY
Colorless	Near Colorless	Slightly Tinted	Very Light Color	Light Color	

## CLARITY

FL	IF	VVS <sup>1-2</sup>	VS <sup>1-2</sup>	SI <sup>1-2</sup>	I <sup>1-3</sup>
Flawless	Internally Flawless	Very Very Slightly Included	Very Slightly Included	Slightly Included	Included



December 19, 2025

IGI Report Number 737531618

Description	NATURAL DIAMOND
-------------	-----------------

Shape and Cutting Style **ROUND BRILLIANT**

Measurements 7.45 - 7.52 X 4.48 MM

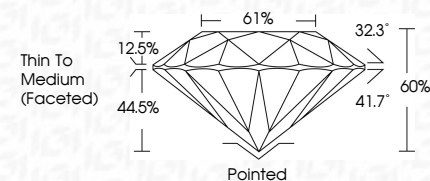
## GRADING RESULTS

Carat Weight 1.50 CARAT

Color Grade	H
-------------	---

Clarity Grade VS 1

Cut Grade **EXCELLENT**



### ADDITIONAL GRADING INFORMATION

Polish **EXCELLENT**Symmetry **EXCELLENT**

Fluorescence **VERY SLIGHT**

Inscription(s)  737531618

© IGI 2020, International Gemological Institute

FD - 10 20

**www.igi.org**



THIS DOCUMENT WAS PRODUCED WITH THE FOLLOWING SECURITY MEASURES: SPECIAL DOCUMENT PAPER, INK SCREENS, WATERMARK, BACKGROUND DESIGNS, HOLOGRAM AND OTHER SECURITY FEATURES NOT LISTED AND DO EXCEED DOCUMENT SECURITY INDUSTRY GUIDELINES

December 19, 2025  
IGI Report No 737531618  
ROUND BRILLIANT

7.65 - 7.85 X 4.48 MM	Carat Weight	VS1	1.50 CARAT
	Color Grade	EXCELLENT	H
	Clarity Grade	EXCELLENT	
	Cut Grade	60%	
	Depth	61%	
	Table	Thin To Medium (Faceted)	
	Grade		
	Culet	Pointed	
	Polish	EXCELLENT	
	Symmetry	EXCELLENT	
	Fluorescence	VERY SLIGHT	
	Inscriptions(s)	see 73753161R	