



**ELECTRONIC COPY**

## DIAMOND REPORT

October 16, 2025	
IGI Report Number	737531411
Description	NATURAL DIAMOND
Shape and Cutting Style	ROUND BRILLIANT
Measurements	8.84 - 8.97 X 5.84 MM

## GRADING RESULTS

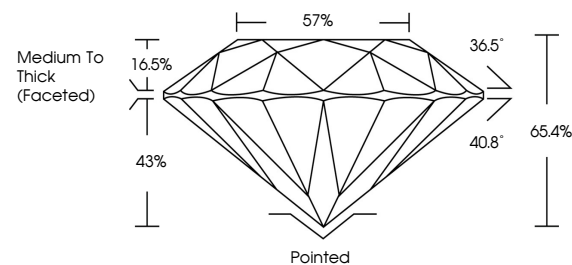
Carat Weight	3.01 CARATS
Color Grade	G
Clarity Grade	VS 2
Cut Grade	VERY GOOD

### ADDITIONAL GRADING INFORMATION

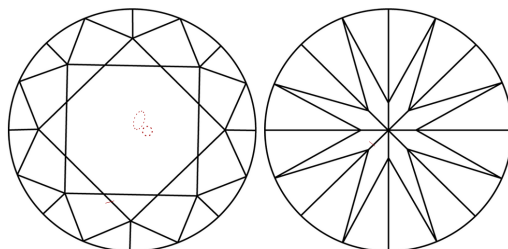
Polish	EXCELLENT
Symmetry	VERY GOOD
Fluorescence	NONE
Inscription(s)	151 737531411

737531411  
Report verification at [igi.org](https://igi.org)

## PROPORTIONS

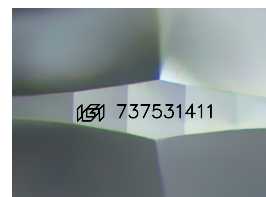


## CLARITY CHARACTERISTICS



## KEY TO SYMBOLS

Red symbols indicate internal characteristics.  
Green symbols indicate external characteristics.



Sample Image Used

**COLOR**

D - F	G - J	K - M	N - R	S - Z	FANCY
Colorless	Near Colorless	Slightly Tinted	Very Light Color	Light Color	

## CLARITY

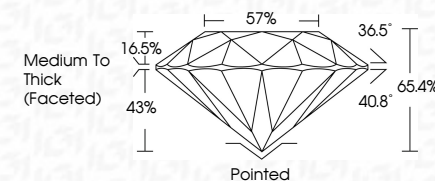
IF	VVS <sup>1-2</sup>	VS <sup>1-2</sup>	SI <sup>1-2</sup>	I <sup>1-3</sup>
Internally Flawless	Very Very Slightly Included	Very Slightly Included	Slightly Included	Included



October 16, 2025	
IGI Report Number	737531411
Description	NATURAL DIAMOND
Shape and Cutting Style	ROUND BRILLIANT
Measurements	8.84 - 8.97 X 5.84 MM

## GRADING RESULTS

Carat Weight	3.01 CARATS
Color Grade	G
Clarity Grade	VS 2
Cut Grade	VERY GOOD



### ADDITIONAL GRADING INFORMATION

Polish	EXCELLENT
Symmetry	VERY GOOD
Fluorescence	NONE
Inscription(s)	(15) 737531411



© IGI 2020, International Gemological Institute

FD - 10 20



THIS DOCUMENT WAS PRODUCED WITH THE FOLLOWING SECURITY MEASURES: SPECIAL DOCUMENT PAPER, INK SCREENS, WATERMARK, BACKGROUND DESIGNS, HOLOGRAM AND OTHER SECURITY FEATURES NOT LISTED AND DO EXCEED DOCUMENT SECURITY INDUSTRY GUIDELINES

**www.igi.org**

October 16, 2025  
GI Report No 737531411  
ROUND BRILLIANT

3.84 - 3.97 X 5.84 MM	Carat Weight	VS 2	3.01 CARATS
	Color Grade	Very Good	
	Clarity Grade	66.4%	
	Depth	57%	
	Table	Medium To Thick (Faceted)	
	Circle	Pointed	
	Polish	Excellent	
	Symmetry	Very Good	
	Fluorescence	None	
	Inscriptions	near 373531411	